

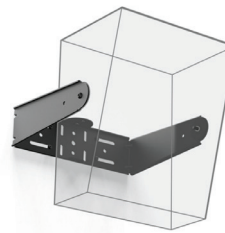
Dolby DSR1090

10" Two-Way Surround Speaker

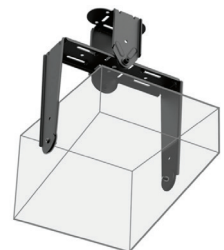
Amazing surround detail for small-to-medium sized auditoriums

The new Dolby® DSR1090 is a two-way passive surround speaker intended for small to medium-sized cinema auditoriums. Designed for either 5.1, Dolby Surround 7.1, or Dolby Atmos applications, the DSR1090 is equipped to perform equally well in rear-surround, side-surround and overhead applications.

A carefully chosen 10" woofer provides robust low/mid frequency while a 1" compression driver mated with a 90° horizontal x 60° vertical waveguide, helps deliver smooth, detailed response within the speaker's entire operating range. The DSR1090 features a passive crossover and 250 Watt power handling. It's simple to install and ready to play right out of the box, making your surround installation quick, elegant, and remarkably effective.



YK-1090 Sidewall
mounting kit



MMA-1090 Multi mount
accessory kit

Key features

- High-power, compact, and attractive surround enclosure
- Flexible mounting options
- Developed for use in small-to-medium, high-performance cinema applications where the highest quality and intelligibility is required for either 5.1, Dolby 7.1 Surround, and Dolby Atmos auditoriums
- Beautiful Dolby design for a rich and elegant auditorium look while minimizing reflection of projector or ambient light
- Smooth response exhibited throughout its entire range
- Top-of-cabinet advanced input plate featuring high-current, spring-loaded terminal block with adequate space for easy series/parallel wiring
- Passive crossover installed for simple plug-and-play performance

Dolby DSR1090 10" Two-Way Surround Speaker

Specifications*

Frequency range ¹	60 Hz – 20 kHz
Usable LF response ²	50 Hz
Coverage window ³	90° H, 60° V
Rated impedance	8 Ohms
Whole-space sensitivity @ 1 watt ⁴	95 dB
Half-space sensitivity @ 1 watt ⁵	97 dB
Power handling ⁶	250 W @ 40 Vrms
Power draw ⁷	160 W
Maximum voltage peak ⁸	142 Vpk
Whole-space maximum continuous SPL @ 1 meter ⁹	119 dB
Half-space maximum continuous SPL @ 1 meter ⁹	121 dB
Whole-space measured acoustic peak SPL @ 1 meter ¹⁰	129 dB
Half-space measured acoustic peak SPL @ 1 meter ¹⁰	131 dB
<hr/>	
Transducers	Low and mid frequencies – 10" High frequencies – 1" Compression driver
Input	Advanced input plate w/high-current spring loaded terminal block
Enclosure	Wood
Accessories	YK-1090 Sidewall mounting kit and MMA-1090 Multi mount accessory kit (both sold separately)
Dimensions (unit)	19.26" H x 15.91" W x 11.56" D (48.9 x 40.4 x 29.4 cm)
Weight (unit)	31 lb (14.1 kg)
Dimensions (shipping / 2 speakers to a box)	23.8" H x 18.8" W x 20.2" D (60.5 x 48 x 51 cm)
Weight (shipping / 2 speakers to a box)	67.5 lb (30.6 kg)

1. +3 dB/-6 dB in half space conditions using required DSP

2. -10 dB in half space conditions

3. -6 dB averaged to on-axis response

4. Measured with 12 dB crest pink noise @ 2.83 Vrms in whole space conditions with an 80 Hz high-pass filter (HPF) and 48 dB low-pass filter (LPF) @ the rated system high frequency (80 Hz is a typical crossover point into Dolby Atmos surround bass management)

5. Measured with 12 dB crest pink noise @ 2.83 Vrms in half-space conditions with required high-pass filter (HPF) and 48 dB low-pass filter (LPF) @ the rated system frequency range

6. 12 dB crest pink noise for two hours with required HPF and 48 dB low-pass filter (LPF) @ the rated system frequency range, calculated power based on minimum impedance

7. Measured average power over 5 seconds at the rated Vrms using 12 dB crest pink noise with required HPF and LPF. This measured power draw from the amplifier is useful for estimating amplifier sizing in overall system design

8. Vpk over 100 hours using stepped Hann shaped sine wave bursts at 1/3rd oct spacing within the rated passband of the system. This data is useful for setting peak stop limiters and amplifier selection

9. Calculated from rated sensitivity and power

10. Measured peak SPL over 5 seconds at rated Vrms using 12 dB crest pink noise with required HPF

The English version of this document is the only legally binding version. Translated versions are not legally binding and are for convenience only.

*Specifications are subject to change without notice.

This documentation applies to Model CID1028

