

# LASER

# ROLY

BEYOND ENVISION

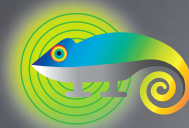
## Three-in-One new 3LCD laser projector

Light

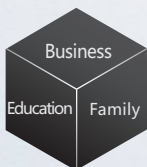
The world's smallest and lightest laser projector

Laser

Stable and Reliable Laser Light Source



ROLY Chameleon Color Richness Technology



### RL-A400W

WXGA 4000 lm



\*The smallest and lightest refers to the comparison results of 4000 to 5000 lumens brightness laser projectors globally as of August 2019.

TAIWAN ROLY TECHNOLOGY CO., LTD  
3F-13, No.14, Lane 609, Section 5, Chongxin Rd.,  
Sanchong Dist., New Taipei City, Taiwan, R.O.C.

[www.rolly-taiwan.com](http://www.rolly-taiwan.com)

## Specifications

Model	RL-A400W	
Display Technology	Liquid Crystal Display	
LCD panel	3x0.59" (16:10)	
Brightness	4000 lm	
Resolution	WXGA (1280x800) Supports highest to WUXGA	
Number of pixels	3,072,000 pixels (1280x800x3)	
Contrast	1500000:1	
Center to corner uniformity	≥ 90%	
Lens	F1.6-1.76 · f=19.158-23.018mm	
Screen size	30"-300"	
Throw distance	0.94m~11.60m	
Throw Ratio	1.48-1.78	
Light source (service life)	Laser diode (Normal mode: 20000h, Eco mode: 25000h)	
Keystone Correction	Vertical: ±40% (Auto+Manual) · Horizontal: ±15% (Manual)	
Input Terminals	PC	VGA (D-sub 15pin) ×1
	Audio	Audio in: mini jack ×1 (3.5mm)
	Video	HDMI ×2 · Video ×1 (RCA)
	Others	USB ×2
Output terminal	VGA (D-sub 15pin) ×1 · Audio out: Mini-jack ×1 (3.5mm)	
Control terminal	RS232 (D-sub 9pin) ×1 · RJ-45 ×1 (Control)	
PC input signal	PC-VGA, SVGA, XGA, SXGA, WXGA, UXGA, WUXGA / Mac	
Video input signal	PAL, SECAM, NTSC (480i, 480p, 576i, 576p, 720p, 1080i, 1080p)	
Scanning Frequency	Horizontal: 15~90kHz · Vertical: 24~85Hz	
Noise	Normal mode: 35dB · Eco mode: 28dB	
Projection method	Ceiling/floor · front/rear	
Speaker	10W×1	
Weight	5.5 KG	
Dimension (WxHxD)	420 x 100 x 280mm (not incl. protruded part)	
Power supply	100~240V AC (50/60Hz)	
Power Consumption	275W max	
Standby power consumption	≤ 0.3W	
Operating environment	Operating temperature: 0°C~40°C · operating humidity: 20%~80% (non-condensation)	
Standard accessory	Wireless remote control, power cord	
Function	<ul style="list-style-type: none"> <li>◆ Built-in LAN for remote monitoring</li> <li>◆ USB Memory Viewer</li> <li>◆ DICOM simulation mode</li> <li>◆ Corner Keystone Correction</li> <li>◆ Quick start and Quick off</li> </ul>	<ul style="list-style-type: none"> <li>◆ Blackboard modes for colored screen surfaces</li> <li>◆ Compatible with PJ-Link · AMX · Crestron</li> <li>◆ Password locking and anti-theft lock latch</li> <li>◆ One-button black screen function</li> <li>◆ Overheat automatic shutdown function</li> </ul>

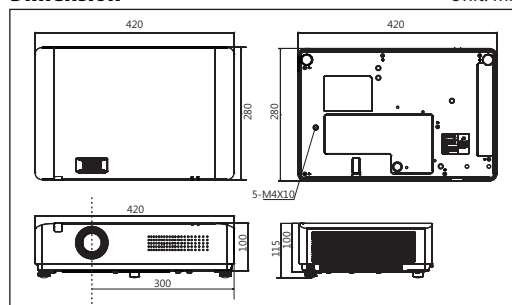
\* These specifications and the product's design are subject to change without notice.

### Projection distance WXGA (16:10 aspect ratio)

Screen size (inch)	min. (wide) (meters)	max. (tele) (meters)
30"	0.94	1.14
80"	2.55	3.07
100"	3.20	3.85
150"	4.81	5.79
200"	6.42	7.72
300"	9.65	11.60

### Dimension

Unit: mm



## Precautions

- ◆ According to the ISO21118 standard: all data represents the average value of the product at the time of production, and the minimum value of the product is 80% of the value.
- ◆ Product specifications are for reference only. If there is any misuse or change, please refer to the actual machine without prior notice.
- ◆ This projector is not a medical device, please do not use it for actual diagnosis. DICOM simulation mode is suitable for medical training and demonstration.
- ◆ The environment and method of use will affect the life of the projector. The listed data is only the maximum, non-guaranteed hours.
- ◆ The final information of the product is marked by the box or the actual product. Please confirm with the dealer when purchasing.
- ◆ All materials have been carefully checked for accuracy, please be aware of any errors in printing or deviations in translation.



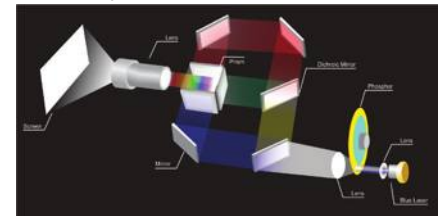
## Features

### ■The World's lightest and smallest laser projector

Compare to other brand models, it has lightweight and simple elegant design. It is more convenient to install or carry, suitable for installation in various environments.

### ■Designed for visual color - 3LCD Technology

For 3LCD technology, the color brightness equals to white brightness. There is no rainbow effect, and higher color restoration capability, which will produce more real and nature color.



### ■No Light-Source Replacement for 20,000 hours

Laser light source has an ultra-long service life of 20,000 hours. With energy-saving and environment-friendly characteristics, it can save more than 30% of energy compared to general projectors.

### ■ROLY Chameleon Color Richness Technology

With over 70% of the NTSC standard color gamut coverage, it truly restores the natural colors seen by the human eye. The overall technology is like a chameleon that can accurately and quickly display its own protective color when it is affected by the environment.

### ■24/7 uninterrupted and stable operation

Breakthrough from the thermal dilemma of the laser-light source, the stability of the whole machine is perfect under the condition of long-term uninterrupted operation.

### ■Other

- ◆ Corner Keystone Correction
- ◆ 360° free and flexible installation function
- ◆ Auto Image Rotation
- ◆ DICOM simulation mode
- ◆ Built-in LAN for remote monitoring
- ◆ Quick start and Quick off function
- ◆ One-button black screen function
- ◆ Overheat automatic shutdown function
- ◆ Password locking and anti-theft lock latch
- ◆ Compatible with Crestron · PJ-Link · AMX

# ROLY

TAIWAN ROLY TECHNOLOGY CO., LTD  
3F-13, No.14, Lane 609, Section 5, Chongxin Rd.,  
Sanzhong Dist., New Taipei City, Taiwan, R.O.C.

www.rolly-taiwan.com