

LASER

ROLY

BEYOND ENVISION

Three-in-One new 3LCD laser projector



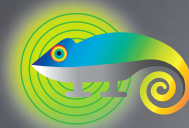
Light

The world's smallest and lightest laser projector

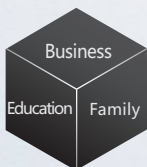


Laser

Stable and Reliable Laser Light Source



ROLY Chameleon Color Richness Technology



RL-A500X

XGA

5000 lm

3LCD



HDMI



*The smallest and lightest refers to the comparison results of 4000 to 5000 lumens brightness laser projectors globally as of August 2019.

TAIWAN ROLY TECHNOLOGY CO., LTD
3F-13, No.14, Lane 609, Section 5, Chongxin Rd.,
Sanchong Dist., New Taipei City, Taiwan, R.O.C.

www.rolly-taiwan.com

Specifications

| Model | RL-A500X | |
|-----------------------------|---|--|
| Display Technology | Liquid Crystal Display | |
| LCD panel | 3x0.63" (4:3) | |
| Brightness | 5000 lm | |
| Resolution | XGA (1024x768) Supports highest to WUXGA | |
| Number of pixels | 2,359,296 pixels (1024x768x3) | |
| Contrast | 1500000:1 | |
| Center to corner uniformity | ≥ 90% | |
| Lens | F1.6-1.76 · f=19.158-23.018mm | |
| Screen size | 30"-300" | |
| Throw distance | 0.89m~10.94m | |
| Throw Ratio | 1.48-1.78 | |
| Light source (service life) | Laser diode (Normal mode: 20000h, Eco mode: 25000h) | |
| Keystone Correction | Vertical: ±40% (Auto+Manual) · Horizontal: ±15% (Manual) | |
| Input Terminals | PC | VGA (D-sub 15pin) ×1 |
| | Audio | Audio in: mini jack ×1 (3.5mm) |
| | Video | HDMI ×2 · Video ×1 (RCA) |
| | Others | USB ×2 |
| Output terminal | VGA (D-sub 15pin) ×1 · Audio out: Mini-jack ×1 (3.5mm) | |
| Control terminal | RS232 (D-sub 9pin) ×1 · RJ-45 ×1 (Control) | |
| PC input signal | PC-VGA, SVGA, XGA, SXGA, WXGA, UXGA, WUXGA / Mac | |
| Video input signal | PAL, SECAM, NTSC (480i, 480p, 576i, 576p, 720p, 1080i, 1080p) | |
| Scanning Frequency | Horizontal: 15~90kHz · Vertical: 24~85Hz | |
| Noise | Normal mode: 35dB · Eco mode: 28dB | |
| Projection method | Ceiling/floor · front/rear | |
| Speaker | 10W×1 | |
| Weight | 5.5 KG | |
| Dimension (WxHxD) | 420 x 100 x 280mm (not incl. protruded part) | |
| Power supply | 100~240V AC (50/60Hz) | |
| Power Consumption | 275W max | |
| Standby power consumption | ≤ 0.3W | |
| Operating environment | Operating temperature: 0°C~40°C · operating humidity: 20%~80% (non-condensation) | |
| Standard accessory | Wireless remote control, power cord | |
| Function | <ul style="list-style-type: none"> ◆ Built-in LAN for remote monitoring ◆ USB Memory Viewer ◆ DICOM simulation mode ◆ Corner Keystone Correction ◆ Quick start and Quick off | <ul style="list-style-type: none"> ◆ Blackboard modes for colored screen surfaces ◆ Compatible with PJ-Link · AMX · Crestron ◆ Password locking and anti-theft lock latch ◆ One-button black screen function ◆ Overheat automatic shutdown function |

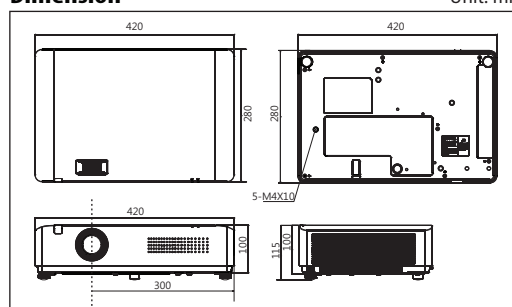
* These specifications and the product's design are subject to change without notice.

Projection distance XGA (4:3 aspect ratio)

| Screen size (inch) | min. (wide) (meters) | max. (tele) (meters) |
|--------------------|----------------------|----------------------|
| 30" | 0.89 | 1.07 |
| 80" | 2.41 | 2.90 |
| 100" | 3.02 | 3.63 |
| 150" | 4.54 | 5.46 |
| 200" | 6.06 | 7.29 |
| 300" | 9.10 | 10.94 |

Dimension

Unit: mm



Precautions

- ◆ According to the ISO21118 standard: all data represents the average value of the product at the time of production, and the minimum value of the product is 80% of the value.
- ◆ Product specifications are for reference only. If there is any misuse or change, please refer to the actual machine without prior notice.
- ◆ This projector is not a medical device, please do not use it for actual diagnosis. DICOM simulation mode is suitable for medical training and demonstration.
- ◆ The environment and method of use will affect the life of the projector. The listed data is only the maximum, non-guaranteed hours.
- ◆ The final information of the product is marked by the box or the actual product. Please confirm with the dealer when purchasing.
- ◆ All materials have been carefully checked for accuracy, please be aware of any errors in printing or deviations in translation.



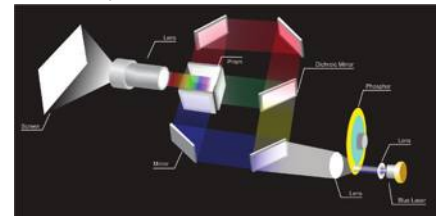
Features

■The World's lightest and smallest laser projector

Compare to other brand models, it has lightweight and simple elegant design. It is more convenient to install or carry, suitable for installation in various environments.

■Designed for visual color - 3LCD Technology

For 3LCD technology, the color brightness equals to white brightness. There is no rainbow effect, and higher color restoration capability, which will produce more real and nature color.



■No Light-Source Replacement for 20,000 hours

Laser light source has an ultra-long service life of 20,000 hours. With energy-saving and environment-friendly characteristics, it can save more than 30% of energy compared to general projectors.

■ROLY Chameleon Color Richness Technology

With over 70% of the NTSC standard color gamut coverage, it truly restores the natural colors seen by the human eye. The overall technology is like a chameleon that can accurately and quickly display its own protective color when it is affected by the environment.

■24/7 uninterrupted and stable operation

Breakthrough from the thermal dilemma of the laser-light source, the stability of the whole machine is perfect under the condition of long-term uninterrupted operation.

■Other

- ◆ Corner Keystone Correction
- ◆ 360° free and flexible installation function
- ◆ Auto Image Rotation
- ◆ DICOM simulation mode
- ◆ Built-in LAN for remote monitoring
- ◆ Quick start and Quick off function
- ◆ One-button black screen function
- ◆ Overheat automatic shutdown function
- ◆ Password locking and anti-theft lock latch
- ◆ Compatible with Crestron · PJ-Link · AMX

ROLY

TAIWAN ROLY TECHNOLOGY CO., LTD
3F-13, No.14, Lane 609, Section 5, Chongxin Rd.,
Sanzhong Dist., New Taipei City, Taiwan, R.O.C.

www.rolly-taiwan.com