

# CHRISTIE SPYDER X80

80 megapixel, true 4K@60Hz  
performance across multiple displays

Auditoriums

Broadcast studios

Conference rooms

Control rooms

Corporate lobbies

Houses of worship

Live event staging

Media centers

Post-production

Sports venues



As the undisputed leader in multi-window processing, Christie Spyder X80 continues to set the standard. Create spectacular experiences with unprecedented 80 megapixel processing power in true 4K@60Hz across multiple displays. As the tool trusted by professionals for the most demanding applications, the Spyder X80 enables the creation of spectacular, never-before-seen visual experiences.

**CHRISTIE®**

# CHRISTIE SPYDER X80

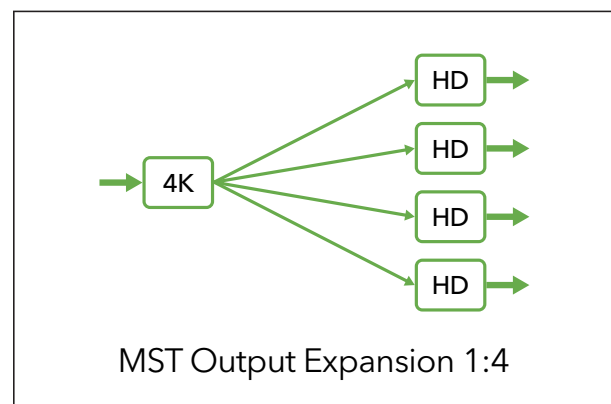
Featuring processing and connectivity capabilities that surpass anything else in the market, the Spyder X80 is the most powerful multi-screen windowing processor and content management solution available. Engineered with direct feedback from users, we specifically built the Spyder X80 for applications that require managing a massive volume of pixels from source to display with the highest level of performance, flexibility and functionality possible.

## Features

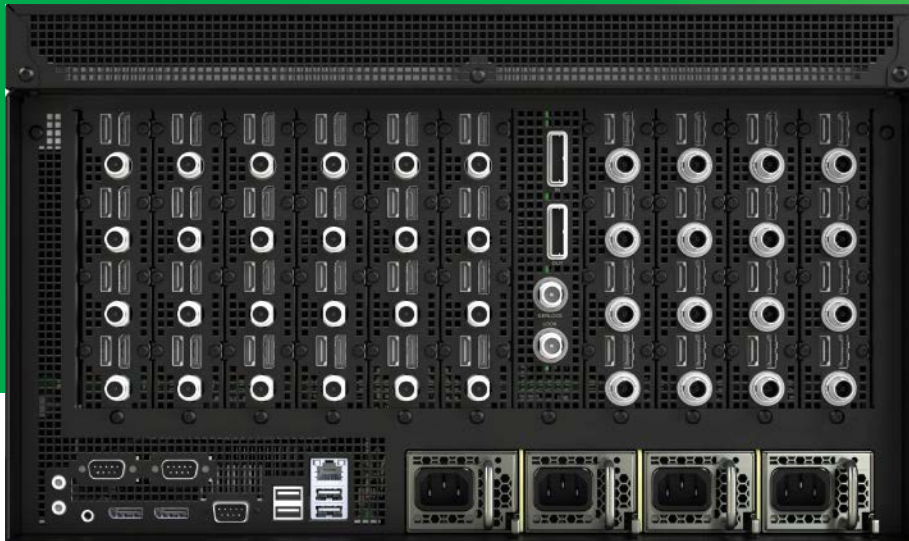
- › Single-cable 4K@60Hz support on every channel
- › Multiple sources and displays
- › Super-fast still loading for backgrounds and as source content
- › User-defined color bit depth. 80 megapixel bandwidth at 8-bit and 53 megapixel at 12-bit
- › Extremely low latency with powerful universal switching built in, cross-point hardware for fast switching and maximum input/output routing capability with no additional signal latency
- › Redundant hot swappable power supplies
- › Spyder Studio client software allows offline editing to configure and program without the need of hardware
- › Customizable multi-viewer output(s) arranges sources, display areas, program and preview for real-time monitoring
- › Intelligent EDID Manager with custom creation of user-defined resolutions, ensures adaptability across intuitive graphical user interface (GUI)
- › Easily and simply expand a 4K output into as many as 4x individual HD streams. Uses off-the-shelf MST technology.

## Functionality

- › Seamless management of multiple SD, HD, 4K and stereoscopic workflows simultaneously
- › External matrix switching supports a wide range of manufacturers
- › Built-in conversion for interlaced signals, resolutions, aspect ratio and refresh rates
- › User-defined edge blending and tiling
- › Window border and drop shadow creation with adjustable color, width, softness, shadow offset and transparency
- › Online editing mode to preset scenes to be built and edited in preview mode without affecting what the audience is seeing
- › Advanced auto-sync functionality
- › External control support of the optional Christie Shot Boxes, and other third-party controllers and interfaces



- › Versatile LCD display
- › 4K@60Hz on every channel



### Connectivity

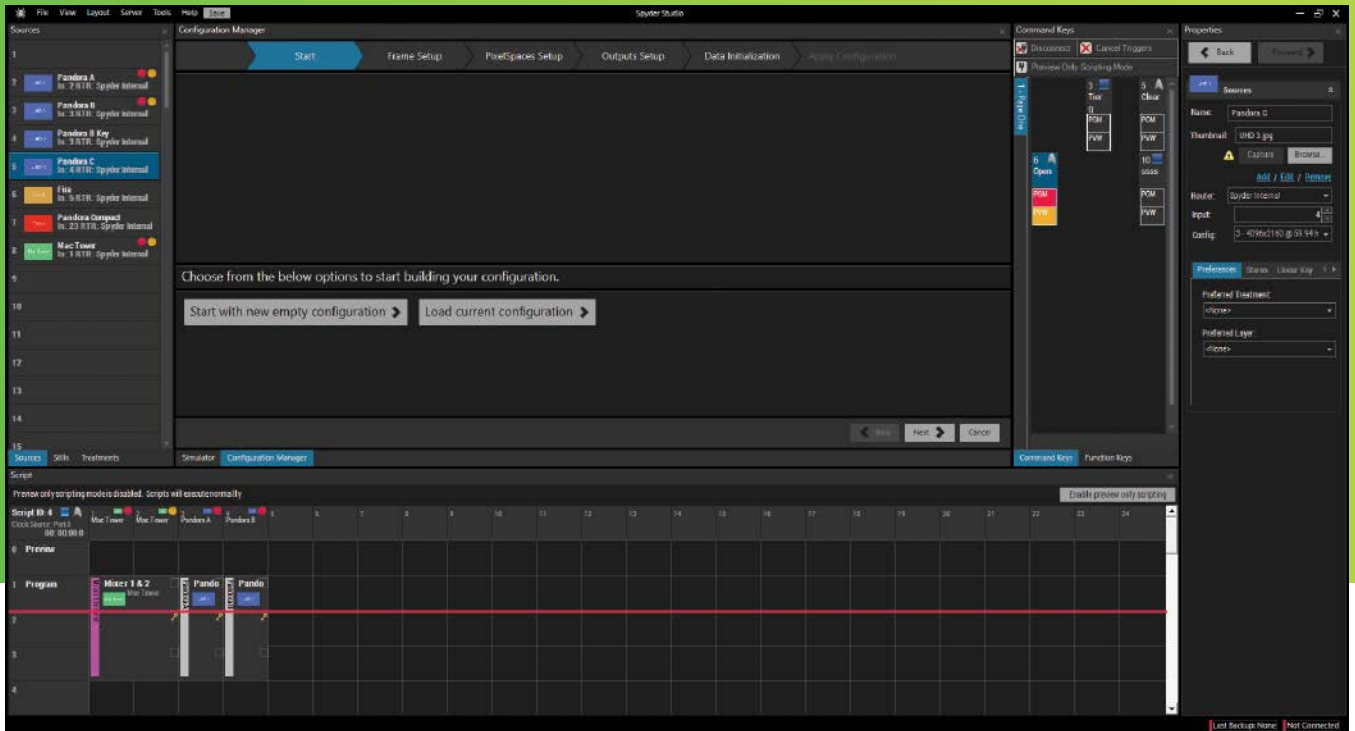
- › Flexible, scalable and customizable I/O configurations with card slot design
- › Each channel = 4K support reducing the need for additional channels and cables
- › Universal input/output capabilities – mix and match multiple formats with single point processing
- › Manages and displays multiple 3D and 2D sources simultaneously (with optional stereoscopic license)
- › Each output individually supports rotation – enabling the creation of vertically-orientated display
- › HDCP 2.2 support up to 4K for compliance with latest in digital copy protection
- › Every input and output = HDMI™ 2.0, DisplayPort™ 1.2 and 12 G-SDI connections

### Industrial design color LCD display

- › Status and display design
- › Smart keyboard functionality, programmable to recall test patterns and diagnostics and more
- › Thumbnail video display keys
- › Context sensitive, programmable
- › User configurable
- › You can use a web browser to show status and logs, upload new firmware, trigger presets, and more<sup>1</sup>

<sup>1</sup> Not a replacement of the client software

- ✓ Designed for the most demanding live environments, operators will love the Spyder Studio's advanced capabilities

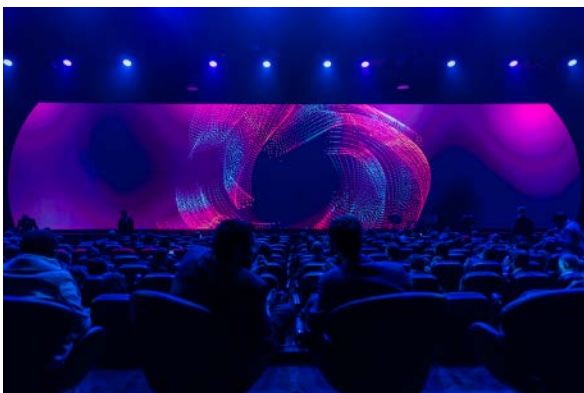


## Remote PC functionality

Allows the support of multiple remote servers to match certain security requirements and classification levels.

## Stereoscopic 3D

Stereoscopic option for displaying stereo and non-stereo simultaneously.



Mobile World Congress, © Mappsreen

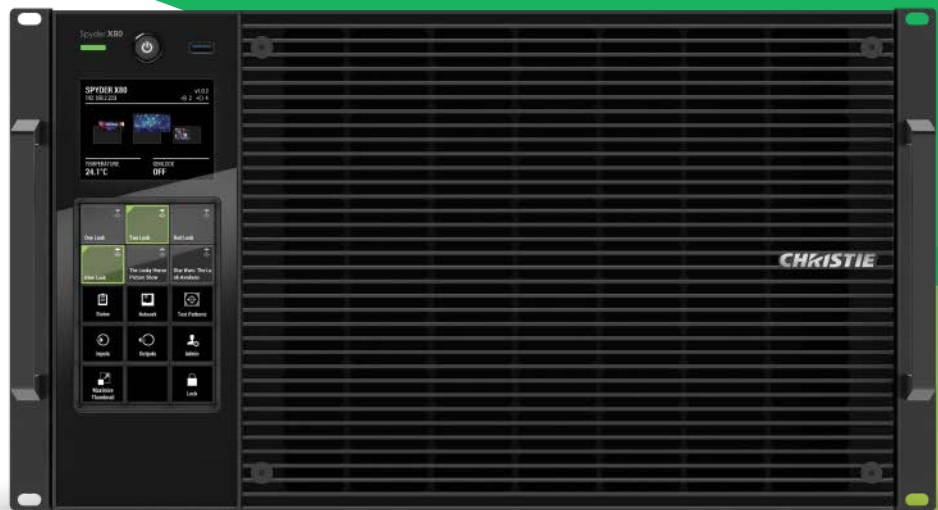
## Graphic user interface/client software

Single control point for all processing and signal distribution functions from PC client software via Ethernet, or external control system.

**Spyder Studio** is a Windows-based, client software (GUI) interface that makes it easy to configure and control the Spyder X80 in real time. From simple presets to complex frame-accurate timelines, Spyder Studio has the flexibility and functionality required for the most demanding live environments.

You can use Spyder Studio offline to completely configure and program the X80 without hardware present. Backup and restore files allow configuration and programming protection along with easily repeating future configurations.

Visit [Christie University](#) for free online courses, and [Learn](#)



^ Unprecedented  
80 megapixel processing  
power in true 4K@60Hz  
across multiple displays

## Technical specifications

Inputs	number	<ul style="list-style-type: none"> <li>For up to 24 input channels.</li> <li>User may define the amount of modules required from 1 to 6</li> </ul>
	signals	<ul style="list-style-type: none"> <li>Each input supports 3 connections</li> <li>DisplayPort™ 1.2 • HDMI™ 2.0 • 12G-SDI</li> </ul>
	resolutions	<ul style="list-style-type: none"> <li>Horizontal up to 7680 and vertical up to 2400 within pixel clock</li> </ul>
	scan rates	<ul style="list-style-type: none"> <li>Up to 120Hz dependant on pixel clock rate maximum</li> </ul>
	bit depth	<ul style="list-style-type: none"> <li>Support for 8/10/12</li> </ul>
	frame lock	<ul style="list-style-type: none"> <li>Via a passive BNC loop supporting black burst and tri-level signals.</li> </ul>
Outputs	number	<ul style="list-style-type: none"> <li>For up to 16 outputs.</li> <li>User may define the amount of modules required from 1 to 4</li> </ul>
	signals	<ul style="list-style-type: none"> <li>Each output supports 3 connections</li> <li>DisplayPort 1.2 • HDMI 2.0 • 12G-SDI</li> </ul>
	resolutions	<ul style="list-style-type: none"> <li>Horizontal up to 4096 and vertical up to 2400 within pixel clock</li> </ul>
	scan rates	<ul style="list-style-type: none"> <li>Up to 120Hz dependent on pixel clock rate maximum</li> </ul>
	bit depth	<ul style="list-style-type: none"> <li>Support for 8/10/12</li> </ul>
Control and networking		<ul style="list-style-type: none"> <li>RS-232 in/out</li> <li>Ethernet (10/100/1000)</li> </ul>
Accessories	standard	<ul style="list-style-type: none"> <li>User manual (USB drive) • 4 AC power cords</li> <li>Christie Spyder Studio software • Rack hardware</li> </ul>
	optional	<ul style="list-style-type: none"> <li>Dust filters</li> </ul>
Enhanced features		<ul style="list-style-type: none"> <li>Independent aspect ratio and frame rate setup</li> <li>Overlays • Transitions • Aspect ratio conversions</li> <li>Integrated source monitoring</li> <li>Output rotation (portrait)</li> <li>Stereoscopic option for displaying stereo and non-stereo simultaneously<sup>2</sup></li> <li>HDCP 2.2 support</li> <li>Remote PC functionality</li> </ul>
Power requirements (fully loaded)	operating voltage	<ul style="list-style-type: none"> <li>90-264 VAC @ 50/60Hz</li> </ul>
	operating current	<ul style="list-style-type: none"> <li>14A max</li> </ul>
	power	<ul style="list-style-type: none"> <li>1680W</li> </ul>
Physical	space required	<ul style="list-style-type: none"> <li>6RU</li> </ul>
	size	<ul style="list-style-type: none"> <li>(LxWxH): 23.54 x 17.36 x 10.28" (598 x 441 x 261mm)</li> </ul>
	shipping size	<ul style="list-style-type: none"> <li>(LxWxH): 30.94 x 23 x 16.3" (786 x 584 x 414mm)</li> </ul>
	weight	<ul style="list-style-type: none"> <li>79.75lbs (36.17kg) - fully loaded</li> </ul>
	shipping weight	<ul style="list-style-type: none"> <li>109.1lbs (49.49kg) - fully loaded</li> </ul>
Operating environment		<ul style="list-style-type: none"> <li>Temperature: 40-95°F (5-35°C)</li> <li>Humidity: 20-80% non-condensing</li> </ul>
Warranty		<ul style="list-style-type: none"> <li>Two years parts and labor</li> <li>Contact an authorized Christie representative for full details of our limited warranty</li> </ul>

<sup>2</sup> For more information, please contact an authorized Christie sales representative

**CHRISTIE®**

christiedigital.com

For the most current specification information, please visit [christiedigital.com](http://christiedigital.com)

Copyright 2022 Christie Digital Systems USA, Inc. All rights reserved. All brand names and product names are trademarks, registered trademarks or tradenames of their respective holders. "Christie" is a trademark of Christie Digital Systems USA, Inc., registered in the United States of America and other countries. DLP® and the DLP logo are registered trademarks of Texas Instruments. Performance specifications are typical. Due to constant research, specifications are subject to change without notice. CD1464\_Christie Spyder X80\_Brochure\_DEC\_21\_EN

