



## UHF 1.8

### INDOOR SOLUTION

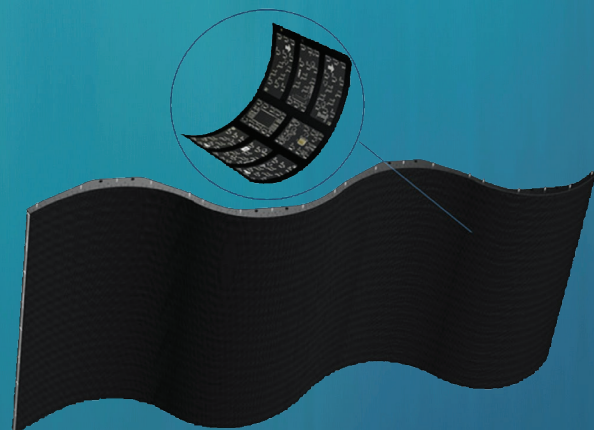
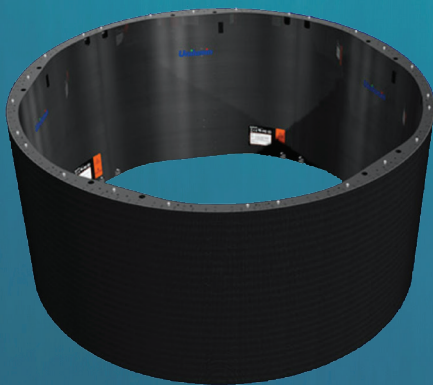
- Ultra Flexible.
- Sustainable Reliability.
- Streamline Operation Efficiency.
- Front Installation and Maintenance.

### Ultra Flexible

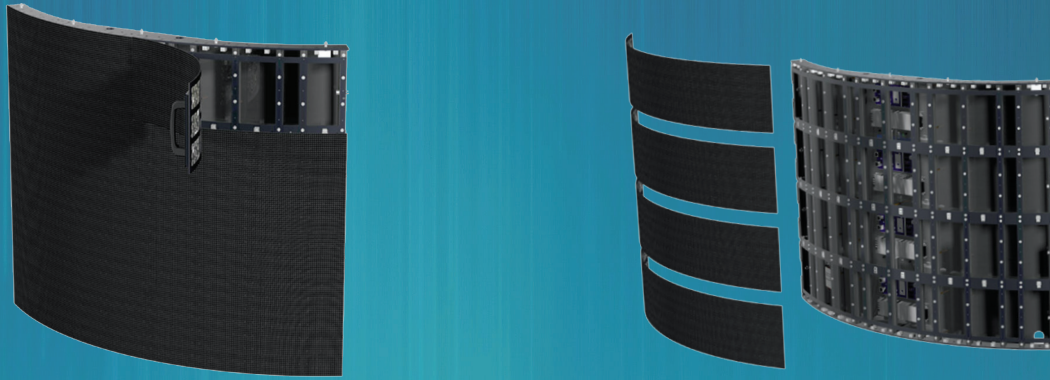
---

Creativity is easy with UHF. With a flexible cabinet size it can meet any custom project demands. UHF is available for arbitrary arc shapes and stress is evenly distributed to all parts of modules for sustainable and streamlined performance.

1. Perfect arc, perfectly integrated with the environment.
2. Flexible shape, born for creative application.
3. Modules protected by memory metal chassis, high precision, and radian uniformity.
4. Front installation and front maintenance.



## Sustainable & Streamlined



UHF has a metal bottom case to create great heat dissipation and customized COS technology protection is available. With a 4-in-1 bar module, it increases the speed of installation and curving precision.

Parameter	Value
Pixel Pitch	1.8mm
LED Type	3-in-1 SMD
Brightness	1000 cd/m <sup>2</sup>
Pixels Per Panel	270 x 135px   270 x 270px   270 x 540px
Pixel Density	291,600 pixels/m <sup>2</sup>
Weight	24 kg/m <sup>2</sup> (52.9 lbs)
Module Size	W250mm x H250mm (9.8in x 9.8in)
Panel Size	500mm x 250mm   500mm   1000mm
Aspect Ratio	Varies Dependent on Design
Curve	Customized According to Customers' Needs
Material	Aluminum
Ingress Protection	Front IP30
Operating Temperature/Humidity	-10°~ +45° / 10~80%RH
Storage Temperature/Humidity	-20°~ +55° / 10~85%RH
Maintenance	Front
Horizontal / Vertical Viewing Angle	155° / 155°
Color Temperature	2000-9300K Adjustable
Brightness Control	Manual/Automatic
Contrast Ratio	5000:1
Input Power (Max/Typical)	62.5W/21W   125W/42W   250W/84W
Video Frame Rate	50/60 Hz
Refresh Rate	3840 Hz
Input Voltage	100~240VAC
Input Power Frequency	50~60 Hz
Processing Depth	14 bit
Mounting Configurations	Fixed, Floor-mounted, Hanging
Optional Mounting Configurations	Concave and Convex

Specifications are for reference only and are subject to change without notice.



## UHF 2.5

### INDOOR SOLUTION

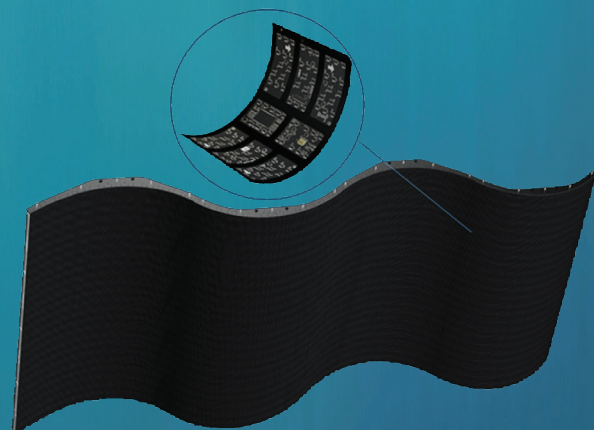
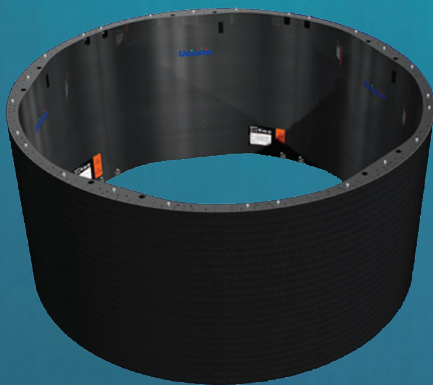
- Ultra Flexible.
- Sustainable Reliability.
- Streamline Operation Efficiency.
- Front Installation and Maintenance.

### Ultra Flexible

---

Creativity is easy with UHF. With a flexible cabinet size it can meet any custom project demands. UHF is available for arbitrary arc shapes and stress is evenly distributed to all parts of modules for sustainable and streamlined performance.

1. Perfect arc, perfectly integrated with the environment.
2. Flexible shape, born for creative application.
3. Modules protected by memory metal chassis, high precision, and radian uniformity.
4. Front installation and front maintenance.



### Contact Us

844.263.3675 | [www.unilumin-usa.com](http://www.unilumin-usa.com)

Find Us @UniluminUSA



## Sustainable & Streamlined



UHF has a metal bottom case to create great heat dissipation and customized COS technology protection is available. With a 4-in-1 bar module, it increases the speed of installation and curving precision.

Parameter	Value
Pixel Pitch	2.5 mm
LED Type	3-in-1 SMD
Brightness	1000 cd/m <sup>2</sup>
Pixels Per Panel	200 x 100px   200 x 200px   200 x 400px
Pixel Density	160,000 pixels/m <sup>2</sup>
Weight	24 kg/m <sup>2</sup> (52.9 lbs)
Module Size	W250mm x H250mm (9.8in x 9.8in)
Panel Size	500mm x 250mm   500mm   1000mm
Aspect Ratio	Varies Dependent on Design
Curve	Minimum radius 0.95M (concave & convex)
Material	Aluminum
Ingress Protection	IP30
Operating Temperature/Humidity	-10°~ +45° / 10~80%RH
Storage Temperature/Humidity	-20°~ +55° / 10~85%RH
Maintenance	Front
Horizontal / Vertical Viewing Angle	155° / 155°
Color Temperature	2000-9300K Adjustable
Brightness Control	Manual/Automatic
Contrast Ratio	5000:1
Input Power (Max/Typical)	55W/18W   110W/37W   220W/74W
Video Frame Rate	50/60 Hz
Refresh Rate	3840 Hz
Input Voltage	100~240VAC
Input Power Frequency	50~60 Hz
Processing Depth	14 bit
Mounting Configurations	Fixed, Floor-mounted, Hanging
Optional Mounting Configurations	Concave and Convex

Specifications are for reference only and are subject to change without notice.



## UHF 3.9

### INDOOR SOLUTION

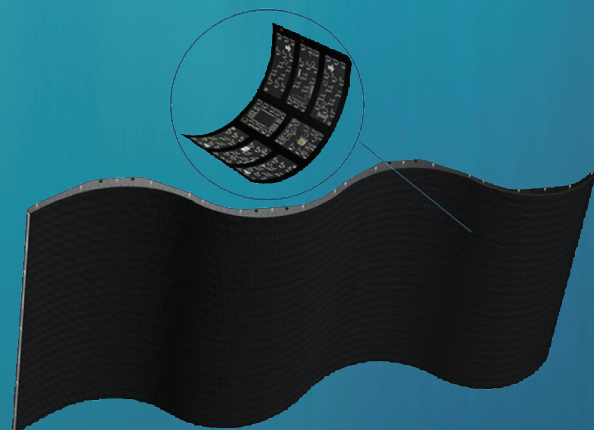
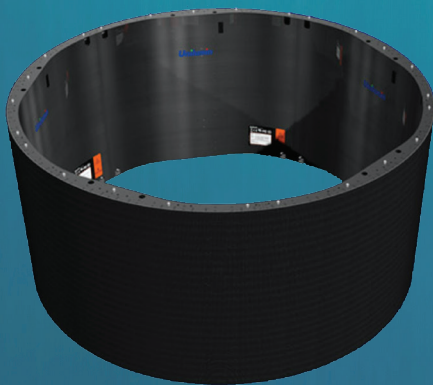
- Ultra Flexible.
- Sustainable Reliability.
- Streamline Operation Efficiency.
- Front Installation and Maintenance.

### Ultra Flexible

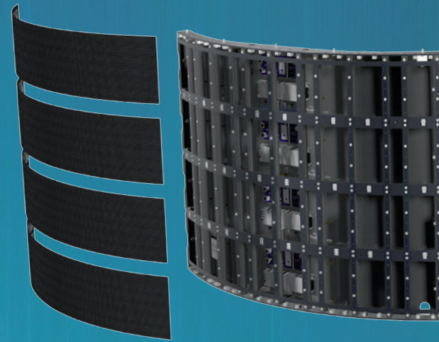
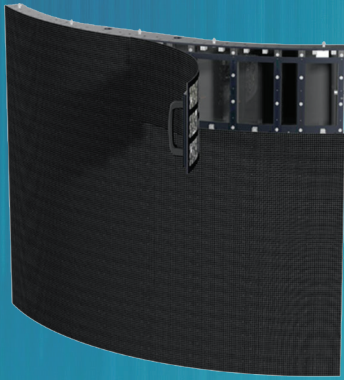
---

Creativity is easy with UHF. With a flexible cabinet size it can meet any custom project demands. UHF is available for arbitrary arc shapes and stress is evenly distributed to all parts of modules for sustainable and streamlined performance.

1. Perfect arc, perfectly integrated with the environment.
2. Flexible shape, born for creative application.
3. Modules protected by memory metal chassis, high precision, and radian uniformity.
4. Front installation and front maintenance.



## Sustainable & Streamlined



UHF has a metal bottom case to create great heat dissipation and customized COS technology protection is available. With a 4-in-1 bar module, it increases the speed of installation and curving precision.

Parameter	Value
Pixel Pitch	3.9 mm
LED Type	3-in-1 SMD
Brightness	1000 cd/m <sup>2</sup>
Pixels Per Panel	128 x 64px   128 x 128px   128 x 256px
Pixel Density	65,536 pixels/m <sup>2</sup>
Weight	24 kg/m <sup>2</sup> (52.9 lbs)
Module Size	W250mm x H250mm (9.8in x 9.8in)
Panel Size	500mm x 250mm   500mm   1000mm
Aspect Ratio	Varies Dependent on Design
Curve	Minimum radius 0.64M (concave & convex)
Material	Aluminum
Ingress Protection	Front IP30
Operating Temperature/Humidity	-10°~ +45° / 10~80%RH
Storage Temperature/Humidity	-20°~ +55° / 10~85%RH
Maintenance	Front
Horizontal / Vertical Viewing Angle	155° / 155°
Color Temperature	2000-9300K Adjustable
Brightness Control	Manual/Automatic
Contrast Ratio	5000:1
Input Power (Max/Typical)	56W/19W   112W/37W   225W/75W
Video Frame Rate	50/60 Hz
Refresh Rate	3840 Hz
Input Voltage	100~240VAC
Input Power Frequency	50~60 Hz
Processing Depth	14 bit
Mounting Configurations	Fixed, Floor-mounted, Hanging
Optional Mounting Configurations	Concave and Convex

Specifications are for reference only and are subject to change without notice.