



## Unano 1.3

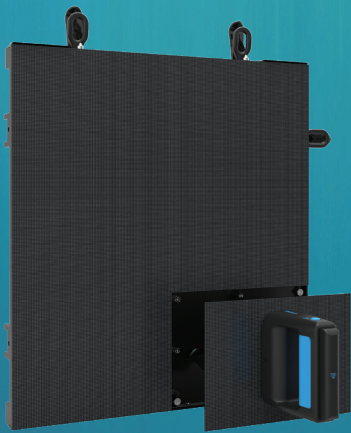
INDOOR SOLUTION

- Easy Maintenance.
- 8:9 Aspect Ratio Unit Design.
- Stronger Edge Protection.

### Easy Maintenance

---

Designed for front maintenance with modular component design for hot-swap and fast replacement.



### Edge Protection

---

Each cabinet has module edge protection mechanisms at the bottom to prevent pixel damage during assembly.

### Contact Us

844.263.3675 | [www.unilumin-usa.com](http://www.unilumin-usa.com)

Find Us @UniluminUSA



# Hanging & Stacking Installation



Modules and precision aluminum cabinets are shipped separately for quick and easy installations.



With a simple hanging beam, 20 LED tiles can be hung in each column without an additional structure.

Parameter	Value
Pixel Pitch	1.3mm
LED Type	Black SMD
Brightness	600cd/m <sup>2</sup> (nits)
Pixels Per Panel	320 x 360 pixels
Pixel Density	522,257 pixels/m <sup>2</sup>
Weight	7 kg (15.4 lbs)
Module Size	W221.4mm x H166.05mm (8.7in x 6.5in)
Cabinet Size	W442.8mm x H498.15mm x D62mm (17.4in x 19.6in x 2.4in)
Aspect Ratio	8:9
Material	Die-casting Aluminum
Ingress Protection	IP50
Operating Temperature/Humidity	-10°~ +40° / 10~80%RH
Storage Temperature/Humidity	-20°~ 60° / 10~85%RH
Curvability	0°~+6° (Concave)
Horizontal / Vertical Viewing Angle	160° / 160°
Color Temperature	2000-9500K Adjustable
Brightness Control	Manual/Automatic
Contrast Ratio	5000:1
Bit Depth	16 bits
Input Power (Max/Typical)	150W/50W per panel
Video Frame Rate	50/60 Hz
Refresh Rate	3840 Hz
Input Voltage	100~240VAC
Input Power Frequency	50~60 Hz
Input Signal	DVI/HDMI/VGA/SDI/DP/AV
Mounting Configurations	Hung, Floor-mounted
Certifications	FCC, UL

Specifications are for reference only and are subject to change without notice.



## Unano 1.8

### INDOOR SOLUTION

- Easy Maintenance.
- 8:9 Aspect Ratio Unit Design.
- Stronger Edge Protection.

### Easy Maintenance

---

Designed for front maintenance with modular component design for hot-swap and fast replacement.



### Edge Protection

---

Each cabinet has module edge protection mechanisms at the bottom to prevent pixel damage during assembly.

### Contact Us

844.263.3675 | [www.unilumin-usa.com](http://www.unilumin-usa.com)

Find Us @UniluminUSA



# Hanging & Stacking Installation



Modules and precision aluminum cabinets are shipped separately for quick and easy installations.



With a simple hanging beam, 20 LED tiles can be hung in each column without an additional structure.

Parameter	Value
Pixel Pitch	1.8mm
LED Type	Black SMD
Brightness	800cd/m <sup>2</sup> (nits)
Pixels Per Panel	240 x 270 pixels
Pixel Density	293,769 pixels/m <sup>2</sup>
Weight	7 kg (15.4 lbs)
Module Size	W221.4mm x H166.05mm (8.7in x 6.5in)
Cabinet Size	W442.8mm x H498.15mm x D62mm (17.4in x 19.6in x 2.4in)
Aspect Ratio	8:9
Material	Die-casting Aluminum
Ingress Protection	IP50
Operating Temperature/Humidity	-10°~ +40° / 10~80%RH
Storage Temperature/Humidity	-20°~ +60° / 10~85%RH
Curvability	0°~+6° (Concave)
Horizontal / Vertical Viewing Angle	160° / 160°
Color Temperature	2000-9500K Adjustable
Brightness Control	Manual/Automatic
Contrast Ratio	5000:1
Bit Depth	16 bits
Input Power (Max/Typical)	150W/50W per panel
Video Frame Rate	50/60 Hz
Refresh Rate	3840 Hz
Input Voltage	100~240VAC
Input Power Frequency	50~60 Hz
Input Signal	DVI/HDMI/VGA/SDI/DP/AV
Mounting Configurations	Hung, Floor-mounted
Certifications	FCC, UL

Specifications are for reference only and are subject to change without notice.