

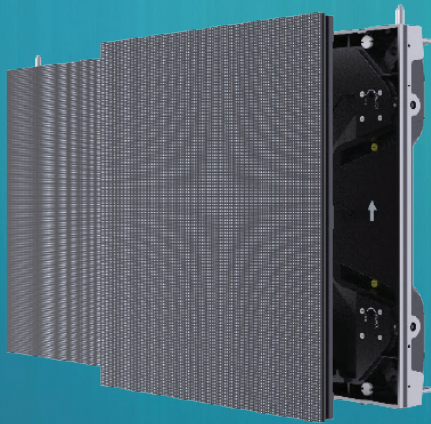
UpanelSII 0.9

INDOOR SOLUTION

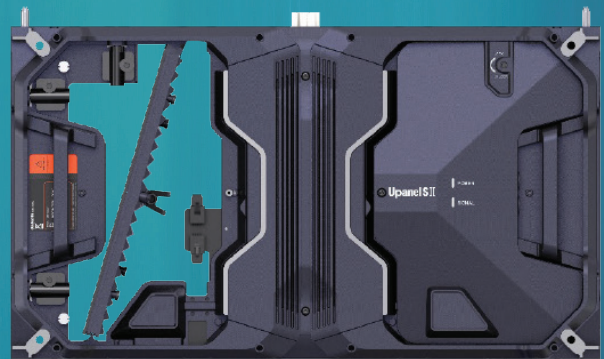
- Smart maintenance, front serviceability (software maintenance and smart bracelet induction maintenance)
- Revolutionary separate structure of cabinet and module
- Seamless splicing between cabinets and between cabinet and module
- Highly precise intelligent module



Smart Maintenance



Fully front and rear accessible effectively reduces maintenance costs and manages higher environmental adaptability.



Guide rail prevents potential damage to the LEDs for optimal protection.



UpanelSII uses a smart sensor automatic pop-up mechanism. When the maintenance tool is close to the module, the module will pop up automatically and can be quickly replaced in 10 seconds.

Parameter	Value
Pixel Pitch	0.95mm
LED Type	3-in-1 SMD
Brightness	1000cd/m ² (nits)
Pixels Per Panel	640 x 360 pixels
Pixel Density	1,101,068 pixels/m ²
Weight	7.9kg (17.4 lbs)
Module Size	W304.96mm×H343.08mm×D41mm / (12in x 13.5in x 1.6in)
Cabinet Size	W609.92mm×H343.08mm×D71mm / (24in x 13.5in x 2.8in)
Aspect Ratio	16:9
Material	Die-casting Aluminum
Ingress Protection	IP50
Operating Temperature/Humidity	-10°~ +45° / 10~80%RH
Storage Temperature/Humidity	-20°~ +55° / 10~85%RH
Curvability	/
Horizontal / Vertical Viewing Angle	160° / 160°
Color Temperature	2000-9500K Adjustable
Brightness Control	Manual/Automatic
Contrast Ratio	8000:1
Input Power (Max/Typical)	142W/47W per panel
Video Frame Rate	50/60 Hz
Refresh Rate	3840 Hz
Input Voltage	100~240VAC
Input Power Frequency	50~60 Hz
Processing Depth	20bit
Certifications	FCC, UL

Specifications are for reference only and are subject to change without notice.

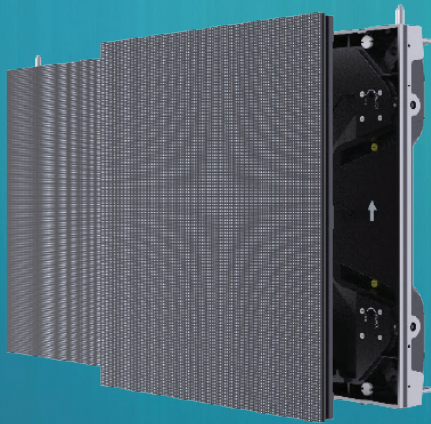
UpanelSII 1.2

INDOOR SOLUTION

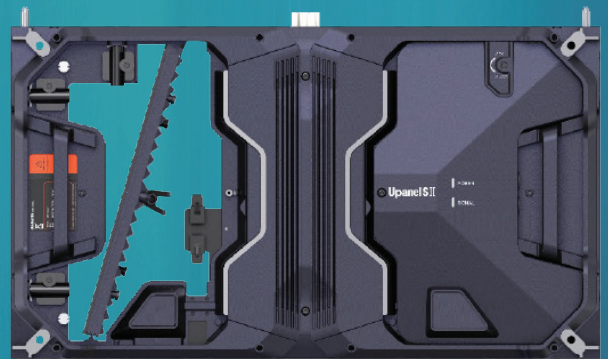
- Smart maintenance, front serviceability (software maintenance and smart bracelet induction maintenance)
- Revolutionary separate structure of cabinet and module
- Seamless splicing between cabinets and between cabinet and module
- Highly precise intelligent module



Smart Maintenance



Fully front and rear accessible effectively reduces maintenance costs and manages higher environmental adaptability.



Guide rail prevents potential damage to the LEDs for optimal protection.



UpanelSII uses a smart sensor automatic pop-up mechanism. When the maintenance tool is close to the module, the module will pop up automatically and can be quickly replaced in 10 seconds.

Parameter	Value
Pixel Pitch	1.27mm
LED Type	3-in-1 SMD
Brightness	1000cd/m ² (nits)
Pixels Per Panel	480 x 270 pixels
Pixel Density	620,001 pixels/m ²
Weight	7.9kg (17.4 lbs)
Module Size	W304.96mm×H343.08mm×D41mm / (12in x 13.5in x 1.6in)
Cabinet Size	W609.92mm×H343.08mm×D71mm / (24in x 13.5in x 2.8in)
Aspect Ratio	16:9
Material	Die-casting Aluminum
Ingress Protection	IP50
Operating Temperature/Humidity	-10°~ +45° / 10~80%RH
Storage Temperature/Humidity	-20°~ +55° / 10~85%RH
Curvability	0°~+3° (concave)
Horizontal / Vertical Viewing Angle	160° / 160°
Color Temperature	2000-9500K Adjustable
Brightness Control	Manual/Automatic
Contrast Ratio	5000:1
Input Power (Max/Typical)	130W/44W per panel
Video Frame Rate	50/60 Hz
Refresh Rate	3840 Hz
Input Voltage	100~240VAC
Input Power Frequency	50~60 Hz
Processing Depth	20bit
Certifications	FCC, UL

Specifications are for reference only and are subject to change without notice.

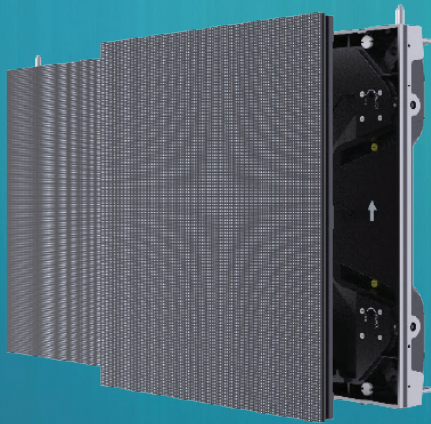
UpanelSII 1.5

INDOOR SOLUTION

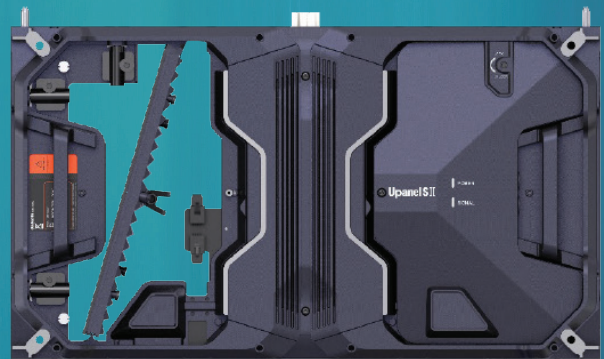
- Smart maintenance, front serviceability (software maintenance and smart bracelet induction maintenance)
- Revolutionary separate structure of cabinet and module
- Seamless splicing between cabinets and between cabinet and module
- Highly precise intelligent module



Smart Maintenance



Fully front and rear accessible effectively reduces maintenance costs and manages higher environmental adaptability.



Guide rail prevents potential damage to the LEDs for optimal protection.



UpanelSII uses a smart sensor automatic pop-up mechanism. When the maintenance tool is close to the module, the module will pop up automatically and can be quickly replaced in 10 seconds.

Parameter	Value
Pixel Pitch	1.58mm
LED Type	3-in-1 SMD
Brightness	1000cd/m ² (nits)
Pixels Per Panel	384 x 216 pixels
Pixel Density	396,550 pixels/m ²
Weight	7.9kg (17.4 lbs)
Module Size	W304.96mm×H343.08mm×D41mm / (12in x 13.5in x 1.6in)
Cabinet Size	W609.92mm×H343.08mm×D71mm / (24in x 13.5in x 2.8in)
Aspect Ratio	16:9
Material	Die-casting Aluminum
Ingress Protection	IP50
Operating Temperature/Humidity	-10°~ +45° / 10~80%RH
Storage Temperature/Humidity	-20°~ +55° / 10~85%RH
Curvability	0°~+7° (concave)
Horizontal / Vertical Viewing Angle	160° / 160°
Color Temperature	2000-9500K Adjustable
Brightness Control	Manual/Automatic
Contrast Ratio	8000:1
Input Power (Max/Typical)	130W/44W per panel
Video Frame Rate	50/60 Hz
Refresh Rate	3840 Hz
Input Voltage	100~240VAC
Input Power Frequency	50~60 Hz
Processing Depth	20bit
Certifications	FCC, UL

Specifications are for reference only and are subject to change without notice.

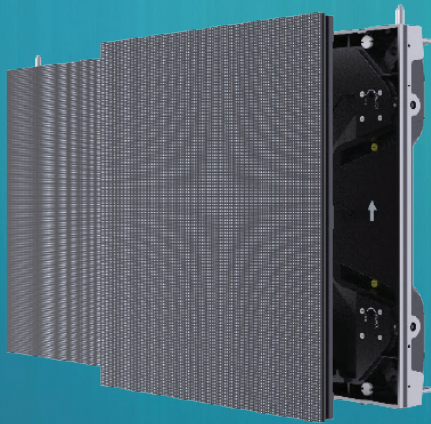
UpanelSII 1.9

INDOOR SOLUTION

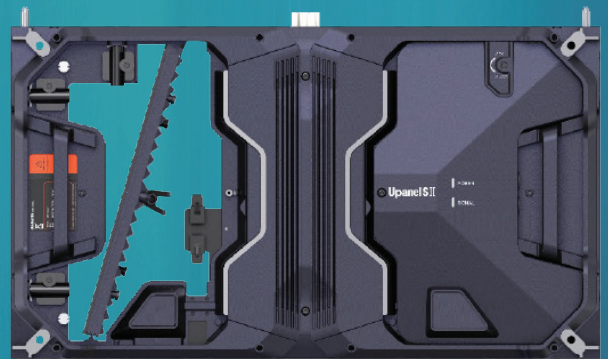
- Smart maintenance, front serviceability (software maintenance and smart bracelet induction maintenance)
- Revolutionary separate structure of cabinet and module
- Seamless splicing between cabinets and between cabinet and module
- Highly precise intelligent module



Smart Maintenance



Fully front and rear accessible effectively reduces maintenance costs and manages higher environmental adaptability.



Guide rail prevents potential damage to the LEDs for optimal protection.



UpanelSII uses a smart sensor automatic pop-up mechanism. When the maintenance tool is close to the module, the module will pop up automatically and can be quickly replaced in 10 seconds.

Parameter	Value
Pixel Pitch	1.906mm
LED Type	3-in-1 SMD
Brightness	1000cd/m ² (nits)
Pixels Per Panel	320 x 180 pixels
Pixel Density	275,267 pixels/m ²
Weight	7.9kg (17.4 lbs)
Module Size	W304.96mm×H343.08mm×D41mm / (12in x 13.5in x 1.6in)
Cabinet Size	W609.92mm×H343.08mm×D71mm / (24in x 13.5in x 2.8in)
Aspect Ratio	16:9
Material	Die-casting Aluminum
Ingress Protection	IP50
Operating Temperature/Humidity	-10°~ +45° / 10~80%RH
Storage Temperature/Humidity	-20°~ +55° / 10~85%RH
Curvability	0°~+7° (concave)
Horizontal / Vertical Viewing Angle	160° / 160°
Color Temperature	2000-9500K Adjustable
Brightness Control	Manual/Automatic
Contrast Ratio	8000:1
Input Power (Max/Typical)	130W/44W per panel
Video Frame Rate	50/60 Hz
Refresh Rate	3840 Hz
Input Voltage	100~240VAC
Input Power Frequency	50~60 Hz
Processing Depth	20bit
Certifications	FCC, UL

Specifications are for reference only and are subject to change without notice.