



URMIII 2.6 (Pro)

500mm×500mm
INDOOR RENTAL SOLUTION

- Click-lock — true single-person installation
- Flip-shield — comprehensive corner protection
- Pinch n' Go Module — easy maintenance

Ease of Use Features



HDR
Technology



Interchangeable
Power Supply



Bottom
Protection



Modular
Design



Click-lock



Flip-shield
for corner protection



Pinch n' Go Module

Creative Installations



Curved Install



°90 Corner Install



Creative Install

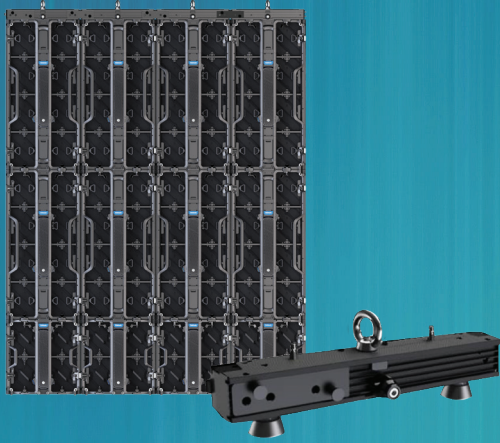
Contact Us

844.263.3675 | www.unilumin-usa.com

Find Us @UniluminUSA



Hanging & Stacking Installation



2-in-1 Hanging & Ground Beam



Stacking Installation Accessories
(ground beam & support, back frame & connector)

Parameter	Value
Pixel Pitch	2.6mm
LED Type	3-in-1 Black SMD
Brightness	800cd/m ² (nits)
Pixels Per Panel	192 x 192 pixels
Pixel Density	147,456 pixels/m ²
Weight	7.9 kg (17.4 lbs)
Module Size	W250mm × H250mm (9.8in x 9.8in)
Cabinet Size	W500mm × H500mm × D83mm (19.7in x 19.7in x 3.3in)
Aspect Ratio	1:1
Material	Die-casting Aluminum
Ingress Protection	IP30
Operating Temperature/Humidity	-10°~ +45° / 10~80%RH
Storage Temperature/Humidity	-20°~ 50° / 10~80%RH
Curvability	(Convex) -10°~+10°(Concave)
Horizontal / Vertical Viewing Angle	140° / 120°
Color Temperature	2000-9300K Adjustable
Brightness Control	Manual/Automatic
Contrast Ratio	3000:1
Input Power (Max/Typical)	120W / 35W per panel
Video Frame Rate	50/60 Hz
Processing Depth	13 bit
Refresh Rate	3840 Hz
Input Voltage	100~240VAC
Input Power Frequency	50~60 Hz
Mounting Configurations	Hanging, Stacking
Certifications	TUV-CE/CB

Specifications are for reference only and are subject to change without notice.



URMIII 2.6 (Pro)

500mm×1000mm
INDOOR RENTAL SOLUTION

- Click-lock — true single-person installation
- Flip-shield — comprehensive corner protection
- Pinch n' Go Module — easy maintenance

Ease of Use Features



HDR
Technology



Interchangeable
Power Supply



Bottom
Protection



Modular
Design



Click-lock



Flip-shield
for corner protection



Pinch n' Go Module

Creative Installations



Curved Install



°90 Corner Install



Creative Install

Contact Us

844.263.3675 | www.unilumin-usa.com

Find Us @UniluminUSA



Hanging & Stacking Installation



2-in-1 Hanging & Ground Beam



Stacking Installation Accessories
(ground beam & support, back frame & connector)

Parameter	Value
Pixel Pitch	2.6mm
LED Type	3-in-1 Black SMD
Brightness	800cd/m ² (nits)
Pixels Per Panel	192 x 384 pixels
Pixel Density	147,456 pixels/m ²
Weight	13 kg (28.7 lbs)
Module Size	W250mm × H250mm (9.8in x 9.8in)
Cabinet Size	W500mm × H1000mm × D83mm (19.7in x 39.4in x 3.3in)
Aspect Ratio	1:2
Material	Die-casting Aluminum
Ingress Protection	IP30
Operating Temperature/Humidity	-10°~ +45° / 10~80%RH
Storage Temperature/Humidity	-20°~ 50° / 10~80%RH
Curvability	(Convex) -10°~+10°(Concave)
Horizontal / Vertical Viewing Angle	140° / 120°
Color Temperature	2000-9300K Adjustable
Brightness Control	Manual/Automatic
Contrast Ratio	3000:1
Input Power (Max/Typical)	240W / 70W per panel
Video Frame Rate	50/60 Hz
Processing Depth	13 bit
Refresh Rate	3840 Hz
Input Voltage	100~240VAC
Input Power Frequency	50~60 Hz
Mounting Configurations	Hanging, Stacking
Certifications	TUV-CE/CB

Specifications are for reference only and are subject to change without notice.



URMIII 3 (Pro)

500mm×500mm
INDOOR RENTAL SOLUTION

- Click-lock — true single-person installation
- Flip-shield — comprehensive corner protection
- Pinch n' Go Module — easy maintenance

Ease of Use Features



HDR
Technology



Interchangeable
Power Supply



Bottom
Protection



Modular
Design



Click-lock



Flip-shield
for corner protection



Pinch n' Go Module

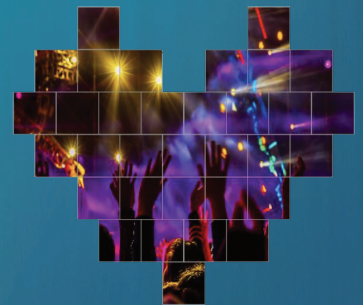
Creative Installations



Curved Install



°90 Corner Install



Creative Install

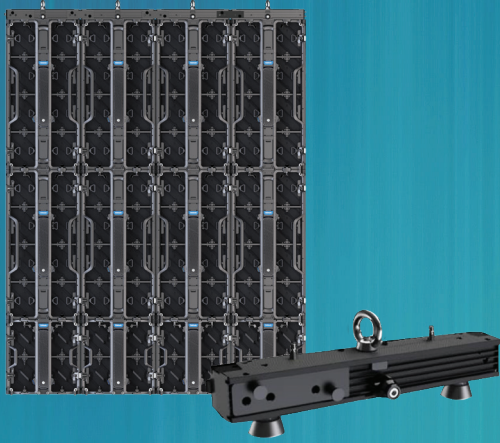
Contact Us

844.263.3675 | www.unilumin-usa.com

Find Us @UniluminUSA



Hanging & Stacking Installation



2-in-1 Hanging & Ground Beam



Stacking Installation Accessories
(ground beam & support, back frame & connector)

Parameter	Value
Pixel Pitch	3.9mm
LED Type	3-in-1 Black SMD
Brightness	800cd/m ² (nits)
Pixels Per Panel	128 x 128 pixels
Pixel Density	65,536 pixels/m ²
Weight	7.9 kg (17.4 lbs)
Module Size	W250mm × H250mm (9.8in x 9.8in)
Cabinet Size	W500mm × H500mm × D83mm (19.7in x 19.7in x 3.3in)
Aspect Ratio	1:1
Material	Die-casting Aluminum
Ingress Protection	IP30
Operating Temperature/Humidity	-10°~ +45° / 10~80%RH
Storage Temperature/Humidity	-20°~ 50° / 10~80%RH
Curvability	(Convex) -10°~+10°(Concave)
Horizontal / Vertical Viewing Angle	140° / 120°
Color Temperature	2000-9300K Adjustable
Brightness Control	Manual/Automatic
Contrast Ratio	3000:1
Input Power (Max/Typical)	120W / 35W per panel
Video Frame Rate	50/60 Hz
Processing Depth	14 bit
Refresh Rate	3840 Hz
Input Voltage	100~240VAC
Input Power Frequency	50~60 Hz
Mounting Configurations	Hanging, Stacking
Certifications	TUV-CE/CB

Specifications are for reference only and are subject to change without notice.



URMIII 03 (Pro)

500mm×500mm
OUTDOOR RENTAL SOLUTION

- Click-lock — true single-person installation
- Flip-shield — comprehensive corner protection
- Pinch n' Go Module — easy maintenance
- Features black surface

Ease of Use Features



HDR
Technology



Interchangeable
Power Supply



Bottom
Protection



Modular
Design



Click-lock



Flip-shield
for corner protection



Pinch n' Go Module

Creative Installations



Curved Install

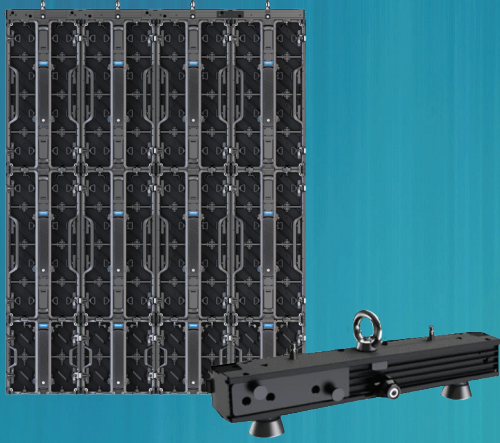


°90 Corner Install



Creative Install

Hanging & Stacking Installation



2-in-1 Hanging & Ground Beam



Stacking Installation Accessories
(ground beam & support, back frame & connector)

Parameter	Value
Pixel Pitch	3.9mm
LED Type	3-in-1 Black SMD
Brightness	3000 cd/m ² (nits)
Pixels Per Panel	128 x 128 pixels
Pixel Density	65,536 pixels/m ²
Weight	8.5 kg (18.7 lbs)
Module Size	W250mm × H250mm (9.8in x 9.8in)
Cabinet Size	W500mm × H1000mm × D83mm (19.7in x 39.4in x 3.3in)
Aspect Ratio	1:1
Material	Die-casting Aluminum
Ingress Protection	IP65
Operating Temperature/Humidity	-20°~ +50° / 10~90%RH
Storage Temperature/Humidity	-20°~ 55° / 10~90%RH
Curvability	(Convex) -10°~+10°(Concave)
Horizontal / Vertical Viewing Angle	140° / 120°
Color Temperature	2000-9300K Adjustable
Brightness Control	Manual/Automatic
Contrast Ratio	5000:1
Input Power (Max/Typical)	170W / 50W per panel
Video Frame Rate	50/60 Hz
Processing Depth	14 bit
Refresh Rate	3840 Hz
Input Voltage	100~240VAC
Input Power Frequency	50~60 Hz
Mounting Configurations	Hanging, Stacking
Certifications	TUV-CE/CB/FCC/IC/UL

Specifications are for reference only and are subject to change without notice.



URMIII 3 (Pro)

500mm×1000mm
INDOOR RENTAL SOLUTION

- Click-lock — true single-person installation
- Flip-shield — comprehensive corner protection
- Pinch n' Go Module — easy maintenance

Ease of Use Features



HDR
Technology



Interchangeable
Power Supply



Bottom
Protection



Modular
Design



Click-lock



Flip-shield
for corner protection



Pinch n' Go Module

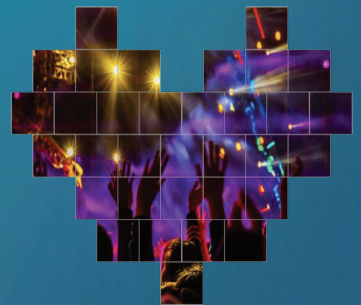
Creative Installations



Curved Install



°90 Corner Install



Creative Install

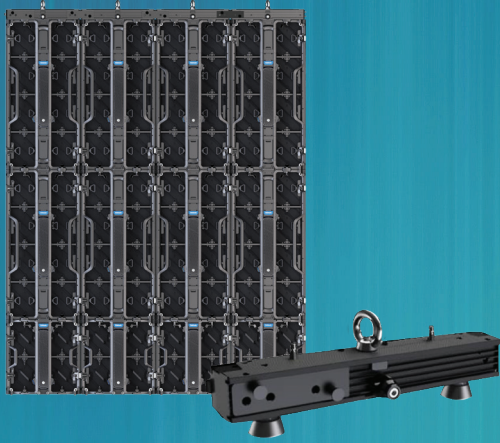
Contact Us

844.263.3675 | www.unilumin-usa.com

Find Us @UniluminUSA



Hanging & Stacking Installation



2-in-1 Hanging & Ground Beam



Stacking Installation Accessories
(ground beam & support, back frame & connector)

Parameter	Value
Pixel Pitch	3.9mm
LED Type	3-in-1 Black SMD
Brightness	800cd/m ² (nits)
Pixels Per Panel	128 x 256 pixels
Pixel Density	65,536 pixels/m ²
Weight	13 kg (28.7 lbs)
Module Size	W250mm × H250mm (9.8in x 9.8in)
Cabinet Size	W500mm × H1000mm × D83mm (19.7in x 39.4in x 3.3in)
Aspect Ratio	1:2
Material	Die-casting Aluminum
Ingress Protection	IP30
Operating Temperature/Humidity	-10°~ +45° / 10~80%RH
Storage Temperature/Humidity	-20°~ 50° / 10~80%RH
Curvability	(Convex) -10°~+10°(Concave)
Horizontal / Vertical Viewing Angle	140° / 120°
Color Temperature	2000-9300K Adjustable
Brightness Control	Manual/Automatic
Contrast Ratio	3000:1
Input Power (Max/Typical)	240W / 70W per panel
Video Frame Rate	50/60 Hz
Processing Depth	14 bit
Refresh Rate	3840 Hz
Input Voltage	100~240VAC
Input Power Frequency	50~60 Hz
Mounting Configurations	Hanging, Stacking
Certifications	TUV-CE/CB

Specifications are for reference only and are subject to change without notice.



URMIII 03 (Pro)

500mm×1000mm
OUTDOOR RENTAL SOLUTION

- Click-lock — true single-person installation
- Flip-shield — comprehensive corner protection
- Pinch n' Go Module — easy maintenance
- Features black surface

Ease of Use Features



HDR
Technology



Interchangeable
Power Supply



Bottom
Protection



Modular
Design



Click-lock



Flip-shield
for corner protection



Pinch n' Go Module

Creative Installations



Curved Install



°90 Corner Install



Creative Install

Hanging & Stacking Installation



2-in-1 Hanging & Ground Beam



Stacking Installation Accessories
(ground beam & support, back frame & connector)

Parameter	Value
Pixel Pitch	3.9mm
LED Type	3-in-1 Black SMD
Brightness	3000 cd/m ² (nits)
Pixels Per Panel	128 x 256 pixels
Pixel Density	65,536 pixels/m ²
Weight	13.9 kg (30.6 lbs)
Module Size	W250mm × H250mm (9.8in x 9.8in)
Cabinet Size	W500mm × H1000mm × D83mm (19.7in x 39.4in x 3.3in)
Aspect Ratio	1:2
Material	Die-casting Aluminum
Ingress Protection	IP65
Operating Temperature/Humidity	-20°~ +50° / 10~90%RH
Storage Temperature/Humidity	-20°~ 55° / 10~90%RH
Curvability	(Convex) -10°~+10°(Concave)
Horizontal / Vertical Viewing Angle	140° / 120°
Color Temperature	2000-9300K Adjustable
Brightness Control	Manual/Automatic
Contrast Ratio	5000:1
Input Power (Max/Typical)	335W / 100W per panel
Video Frame Rate	50/60 Hz
Processing Depth	14 bit
Refresh Rate	3840 Hz
Input Voltage	100~240VAC
Input Power Frequency	50~60 Hz
Mounting Configurations	Hanging, Stacking
Certifications	TUV-CE/CB/FCC/IC/UL

Specifications are for reference only and are subject to change without notice.



URMIII 04 (Pro)

500mm×500mm
OUTDOOR RENTAL SOLUTION

- Click-lock — true single-person installation
- Flip-shield — comprehensive corner protection
- Pinch n' Go Module — easy maintenance

Ease of Use Features



HDR
Technology



Interchangeable
Power Supply



Bottom
Protection



Modular
Design



Click-lock



Flip-shield
for corner protection



Pinch n' Go Module

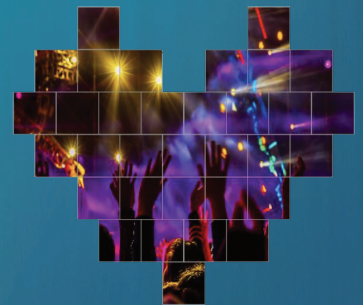
Creative Installations



Curved Install



°90 Corner Install



Creative Install

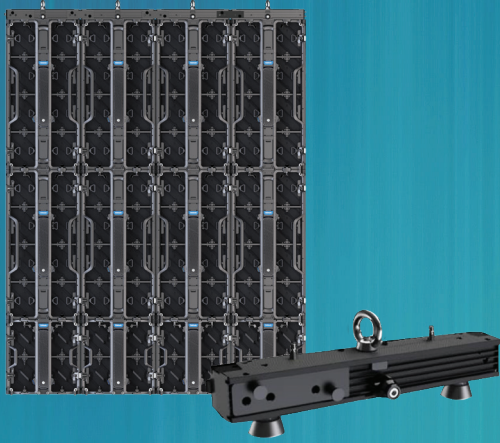
Contact Us

844.263.3675 | www.unilumin-usa.com

Find Us @UniluminUSA



Hanging & Stacking Installation



2-in-1 Hanging & Ground Beam



Stacking Installation Accessories
(ground beam & support, back frame & connector)

Parameter	Value
Pixel Pitch	4.8mm
LED Type	3-in-1 SMD
Brightness	4500 cd/m ² (nits)
Pixels Per Panel	104 x 104 pixels
Pixel Density	43,264 pixels/m ²
Weight	8.5 kg (18.7 lbs)
Module Size	W250mm × H250mm (9.8in x 9.8in)
Cabinet Size	W500mm × H500mm × D83mm (19.7in x 19.7in x 3.3in)
Aspect Ratio	1:1
Material	Die-casting Aluminum
Ingress Protection	IP65
Operating Temperature/Humidity	-10°~ +45° / 10~80%RH
Storage Temperature/Humidity	-20°~ 50° / 10~80%RH
Curvability	(Convex) -10°~+10°(Concave)
Horizontal / Vertical Viewing Angle	140° / 120°
Color Temperature	2000-9300K Adjustable
Brightness Control	Manual/Automatic
Contrast Ratio	3000:1
Input Power (Max/Typical)	170W / 50W per panel
Video Frame Rate	50/60 Hz
Processing Depth	14 bit
Refresh Rate	3840 Hz
Input Voltage	100~240VAC
Input Power Frequency	50~60 Hz
Mounting Configurations	Hanging, Stacking
Certifications	TUV-CE/CB

Specifications are for reference only and are subject to change without notice.



URMIII 04 (Pro)

500mm×1000mm
OUTDOOR RENTAL SOLUTION

- Click-lock — true single-person installation
- Flip-shield — comprehensive corner protection
- Pinch n' Go Module — easy maintenance

Ease of Use Features



HDR
Technology



Interchangeable
Power Supply



Bottom
Protection



Modular
Design



Click-lock



Flip-shield
for corner protection



Pinch n' Go Module

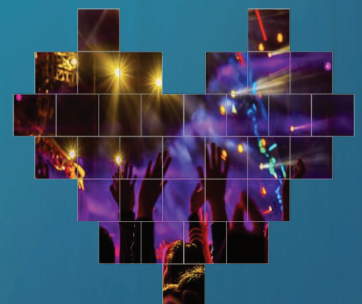
Creative Installations



Curved Install

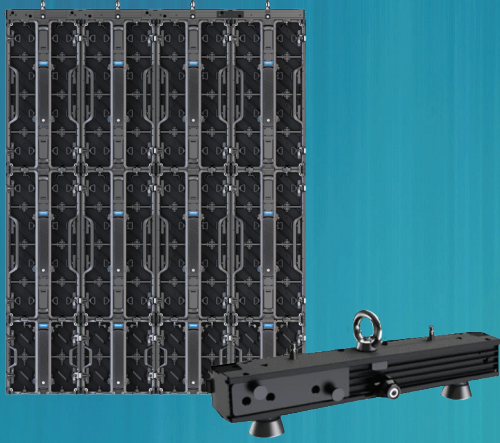


°90 Corner Install



Creative Install

Hanging & Stacking Installation



2-in-1 Hanging & Ground Beam



Stacking Installation Accessories
(ground beam & support, back frame & connector)

Parameter	Value
Pixel Pitch	4.8mm
LED Type	3-in-1 SMD
Brightness	4500 cd/m ² (nits)
Pixels Per Panel	104 x 208 pixels
Pixel Density	43,264 pixels/m ²
Weight	13.9 kg (30.6 lbs)
Module Size	W250mm × H250mm (9.8in x 9.8in)
Cabinet Size	W500mm × H1000mm × D83mm (19.7in x 39.4in x 3.3in)
Aspect Ratio	1:2
Material	Die-casting Aluminum
Ingress Protection	IP65
Operating Temperature/Humidity	-10°~ +50° / 10~90%RH
Storage Temperature/Humidity	-20°~ 55° / 10~90%RH
Curvability	(Convex) -10°~+10°(Concave)
Horizontal / Vertical Viewing Angle	140° / 120°
Color Temperature	2000-9300K Adjustable
Brightness Control	Manual/Automatic
Contrast Ratio	3000:1
Input Power (Max/Typical)	335W / 100W per panel
Video Frame Rate	50/60 Hz
Processing Depth	14 bit
Refresh Rate	3840 Hz
Input Voltage	100~240VAC
Input Power Frequency	50~60 Hz
Mounting Configurations	Hanging, Stacking
Certifications	TUV-CE/CB

Specifications are for reference only and are subject to change without notice.



URMIII 05 (Pro)

500mm×500mm
OUTDOOR RENTAL SOLUTION

- Click-lock — true single-person installation
- Flip-shield — comprehensive corner protection
- Pinch n' Go Module — easy maintenance

Ease of Use Features



HDR
Technology



Interchangeable
Power Supply



Bottom
Protection



Modular
Design



Click-lock



Flip-shield
for corner protection



Pinch n' Go Module

Creative Installations



Curved Install

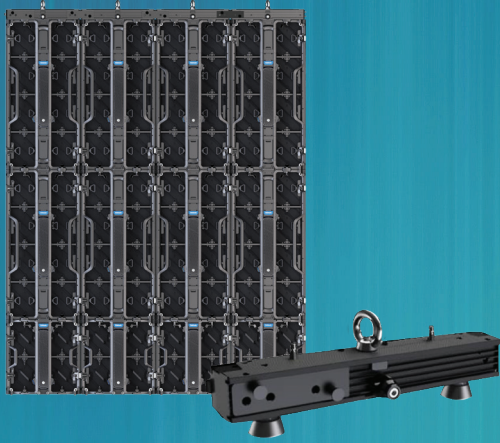


°90 Corner Install



Creative Install

Hanging & Stacking Installation



2-in-1 Hanging & Ground Beam



Stacking Installation Accessories
(ground beam & support, back frame & connector)

Parameter	Value
Pixel Pitch	5.9mm
LED Type	3-in-1 SMD
Brightness	5000 cd/m ² (nits)
Pixels Per Panel	84 x 84 pixels
Pixel Density	28,224 pixels/m ²
Weight	8.5 kg (18.7 lbs)
Module Size	W250mm × H250mm (9.8in x 9.8in)
Cabinet Size	W500mm × H500mm × D83mm (19.7in x 19.7in x 3.3in)
Aspect Ratio	1:1
Material	Die-casting Aluminum
Ingress Protection	IP65
Operating Temperature/Humidity	-20°~ +50° / 10~90%RH
Storage Temperature/Humidity	-20°~ 55° / 10~90%RH
Curvability	(Convex) -10°~+10°(Concave)
Horizontal / Vertical Viewing Angle	140° / 120°
Color Temperature	2000-9300K Adjustable
Brightness Control	Manual/Automatic
Contrast Ratio	5000:1
Input Power (Max/Typical)	170W / 50W per panel
Video Frame Rate	50/60 Hz
Processing Depth	14 bit
Refresh Rate	3840 Hz
Input Voltage	100~240VAC
Input Power Frequency	50~60 Hz
Mounting Configurations	Hanging, Stacking
Certifications	TUV-CE/CB

Specifications are for reference only and are subject to change without notice.



URMIII 05 (Pro)

500mm×1000mm
OUTDOOR RENTAL SOLUTION

- Click-lock — true single-person installation
- Flip-shield — comprehensive corner protection
- Pinch n' Go Module — easy maintenance

Ease of Use Features



HDR
Technology



Interchangeable
Power Supply



Bottom
Protection



Modular
Design



Click-lock

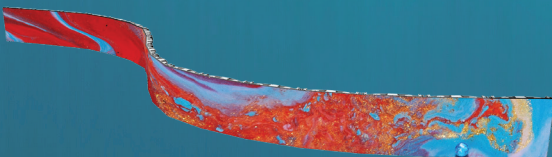


Flip-shield
for corner protection



Pinch n' Go Module

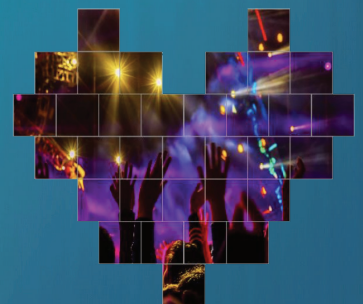
Creative Installations



Curved Install



°90 Corner Install



Creative Install

Hanging & Stacking Installation



2-in-1 Hanging & Ground Beam



Stacking Installation Accessories
(ground beam & support, back frame & connector)

Parameter	Value
Pixel Pitch	5.9mm
LED Type	3-in-1 SMD
Brightness	5000 cd/m ² (nits)
Pixels Per Panel	84 x 168 pixels
Pixel Density	28,224 pixels/m ²
Weight	13.9 kg (30.6 lbs)
Module Size	W250mm × H250mm (9.8in x 9.8in)
Cabinet Size	W500mm × H500mm × D83mm (19.7in x 19.7in x 3.3in)
Aspect Ratio	1:2
Material	Die-casting Aluminum
Ingress Protection	IP65
Operating Temperature/Humidity	-20°~ +50° / 10~90%RH
Storage Temperature/Humidity	-20°~ 55° / 10~90%RH
Curvability	(Convex) -10°~+10°(Concave)
Horizontal / Vertical Viewing Angle	140° / 120°
Color Temperature	2000-9300K Adjustable
Brightness Control	Manual/Automatic
Contrast Ratio	5000:1
Input Power (Max/Typical)	335W / 100W per panel
Video Frame Rate	50/60 Hz
Processing Depth	14 bit
Refresh Rate	3840 Hz
Input Voltage	100~240VAC
Input Power Frequency	50~60 Hz
Mounting Configurations	Hanging, Stacking
Certifications	TUV-CE/CB

Specifications are for reference only and are subject to change without notice.