



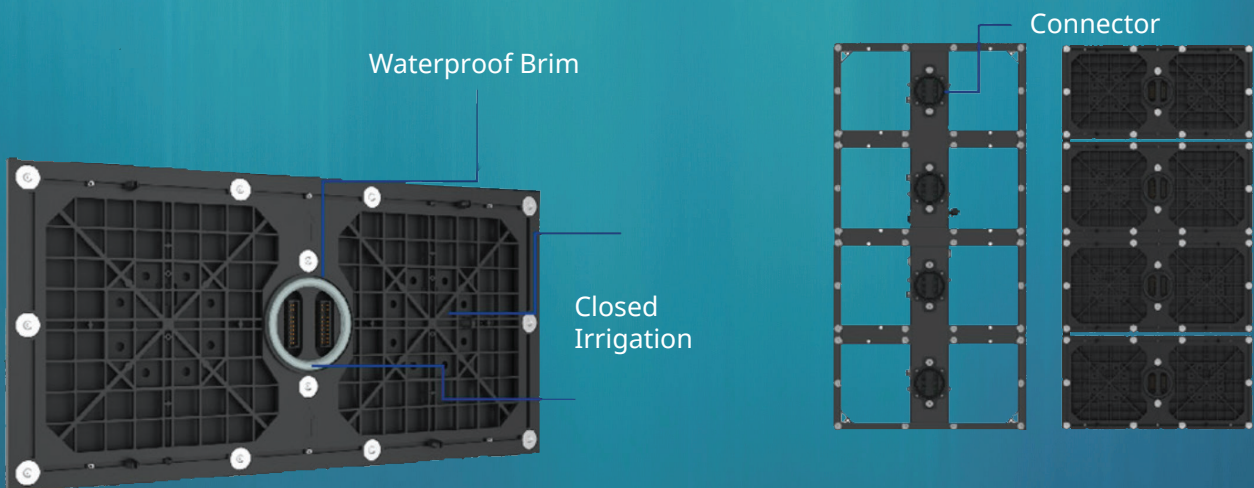
Uslim-O3

500 x 500mm
OUTDOOR SOLUTION

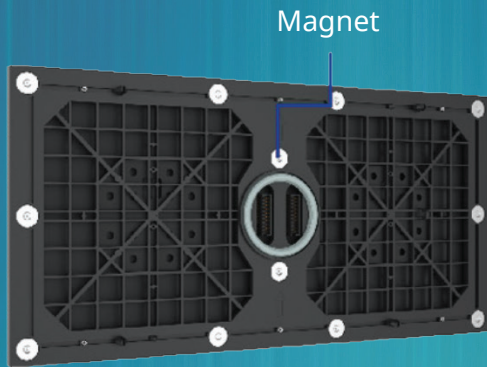
- Waterproof Technology
- Easy Operation.
- Great Heat Dissipation.
- Fully Front Serviceable.

Waterproof Technology

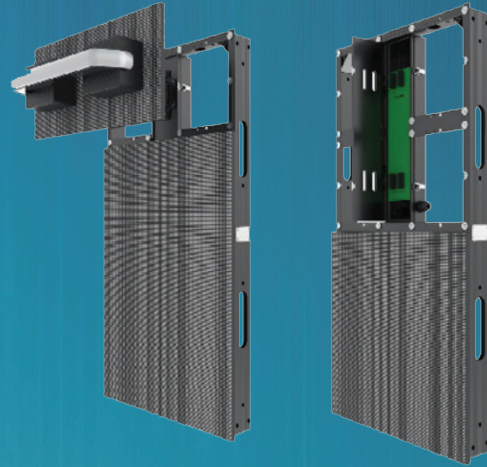
Triple protection of module: waterproof brim, closed irrigation and waterproof ring improve the overall performance of the Uslim-O. The whole panel has only four module connectors, which reduces the failure rate greatly.



Easy Operation & Front Serviceability



Module magnet design enables fast and easy maintenance.



After the module is removed, the power supply and card receiving can be maintained from the front by opening the power supply box.

Parameter	Value	
Pixel Pitch	3.9mm	
LED Type	3-in-1 SMD	
Brightness	4,500 cd/m ²	5,500 cd/m ² (Gold Version)
Pixels Per Panel	128 x 128 px	
Pixel Density	65,536 pixels/m ²	
Weight	36 kg (79.4 lbs)	
Module Size	W500mm x H250mm / (19.7in x 9.8in)	
Cabinet Size	W500mm x H500mm x D86mm / (19.7in x 19.7in x 3.4in)	
Aspect Ratio	1:1	
Material	Die-casting Aluminum	
Ingress Protection	IP66(Front) / IP65(Rear)	
Operating Temperature/Humidity	-20°~ +50° / 10~90%RH	
Storage Temperature/Humidity	-30°~ +60° / 10~80%RH	
Maintenance	Intelligent Front Service	
Horizontal / Vertical Viewing Angle	140° / 120°	
Color Temperature	2000-9300K Adjustable	
Brightness Control	Manual/Automatic	
Contrast Ratio	3500:1	4000:1
Input Power (Max/Typical)	150W x 50W per panel	168W x 56W per panel
Video Frame Rate	50/60 Hz	
Refresh Rate	3840 Hz	
Input Voltage	100~240VAC	
Input Power Frequency	50~60 Hz	
Processing Depth	14 bit	
Calibration	Support brightness and chroma	
Mounting Configurations	Fixed	

Specifications are for reference only and are subject to change without notice.



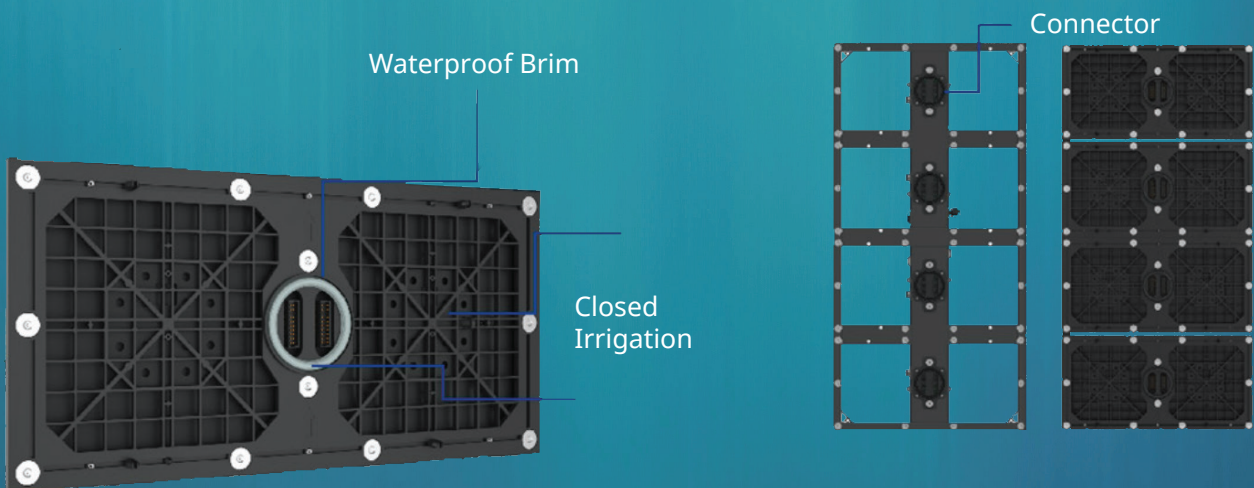
Uslim-O3

500 x 1000mm
OUTDOOR SOLUTION

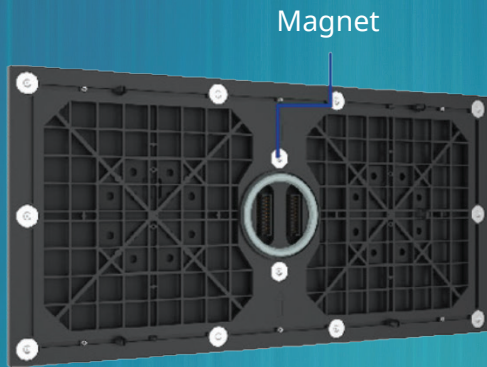
- Waterproof Technology
- Easy Operation.
- Great Heat Dissipation.
- Fully Front Serviceable.

Waterproof Technology

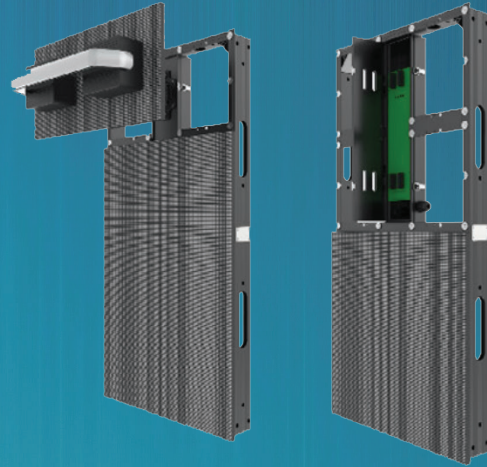
Triple protection of module: waterproof brim, closed irrigation and waterproof ring improve the overall performance of the Uslim-O. The whole panel has only four module connectors, which reduces the failure rate greatly.



Easy Operation & Front Serviceability



Module magnet design enables fast and easy maintenance.



After the module is removed, the power supply and card receiving can be maintained from the front by opening the power supply box.

Parameter	Value	
Pixel Pitch	3.9mm	
LED Type	3-in-1 SMD	
Brightness	4,500 cd/m ²	5,500 cd/m ² (Gold Version)
Pixels Per Panel	128 x 256 px	
Pixel Density	65,536 pixels/m ²	
Weight	31 kg (68.3 lbs)	
Module Size	W500mm x H250mm / (19.7in x 9.8in)	
Cabinet Size	W500mm x H1000mm x D86mm / (19.7in x 39.4in x 3.4in)	
Aspect Ratio	1:2	
Material	Die-casting Aluminum	
Ingress Protection	IP66(Front) / IP65(Rear)	
Operating Temperature/Humidity	-20°~ +50° / 10~90%RH	
Storage Temperature/Humidity	-30°~ +60° / 10~80%RH	
Maintenance	Intelligent Front Service	
Horizontal / Vertical Viewing Angle	140° / 120°	
Color Temperature	2000-9300K Adjustable	
Brightness Control	Manual/Automatic	
Contrast Ratio	3500:1	4000:1
Input Power (Max/Typical)	300W x 100W per panel	335W x 112W per panel
Video Frame Rate	50/60 Hz	
Refresh Rate	3840 Hz	
Input Voltage	100~240VAC	
Input Power Frequency	50~60 Hz	
Processing Depth	14 bit	
Calibration	Support brightness and chroma	
Mounting Configurations	Fixed	

Specifications are for reference only and are subject to change without notice.



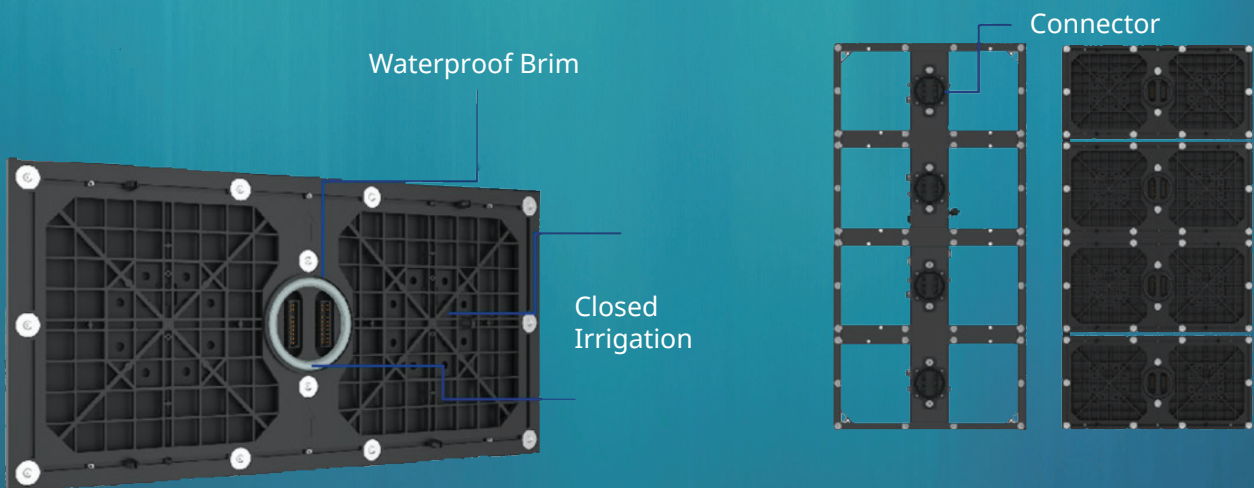
Uslim-O4

500 x 500mm
OUTDOOR SOLUTION

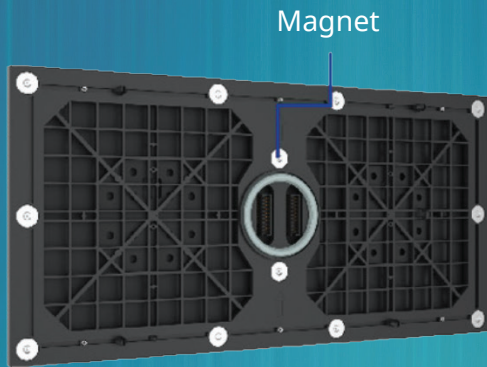
- Waterproof Technology
- Easy Operation.
- Great Heat Dissipation.
- Fully Front Serviceable.

Waterproof Technology

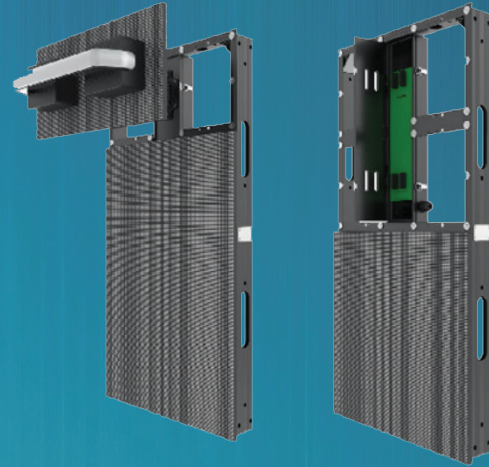
Triple protection of module: waterproof brim, closed irrigation and waterproof ring improve the overall performance of the Uslim-O. The whole panel has only four module connectors, which reduces the failure rate greatly.



Easy Operation & Front Serviceability



Module magnet design enables fast and easy maintenance.



After the module is removed, the power supply and card receiving can be maintained from the front by opening the power supply box.

Parameter	Value	
Pixel Pitch	4.8mm	
LED Type	3-in-1 SMD	
Brightness	4,500 cd/m ²	5,500 cd/m ² (Gold Version)
Pixels Per Panel	104 x 104 px	
Pixel Density	43,264 pixels/m ²	
Weight	34 kg (75 lbs)	
Module Size	W500mm x H250mm / (19.7in x 9.8in)	
Cabinet Size	W500mm x H500mm x D86mm / (19.7in x 19.7in x 3.4in)	
Aspect Ratio	1:1	
Material	Die-casting Aluminum	
Ingress Protection	IP66(Front) / IP65(Rear)	
Operating Temperature/Humidity	-20°~ +50° / 10~90%RH	
Storage Temperature/Humidity	-30°~ +60° / 10~80%RH	
Maintenance	Intelligent Front Service	
Horizontal / Vertical Viewing Angle	140° / 120°	
Color Temperature	2000-9300K Adjustable	
Brightness Control	Manual/Automatic	
Contrast Ratio	3500:1	4000:1
Input Power (Max/Typical)	150W x 50W per panel	168W x 56W per panel
Video Frame Rate	50/60 Hz	
Refresh Rate	3840 Hz	
Input Voltage	100~240VAC	
Input Power Frequency	50~60 Hz	
Processing Depth	14 bit	
Calibration	Support brightness and chroma	
Mounting Configurations	Fixed	

Specifications are for reference only and are subject to change without notice.



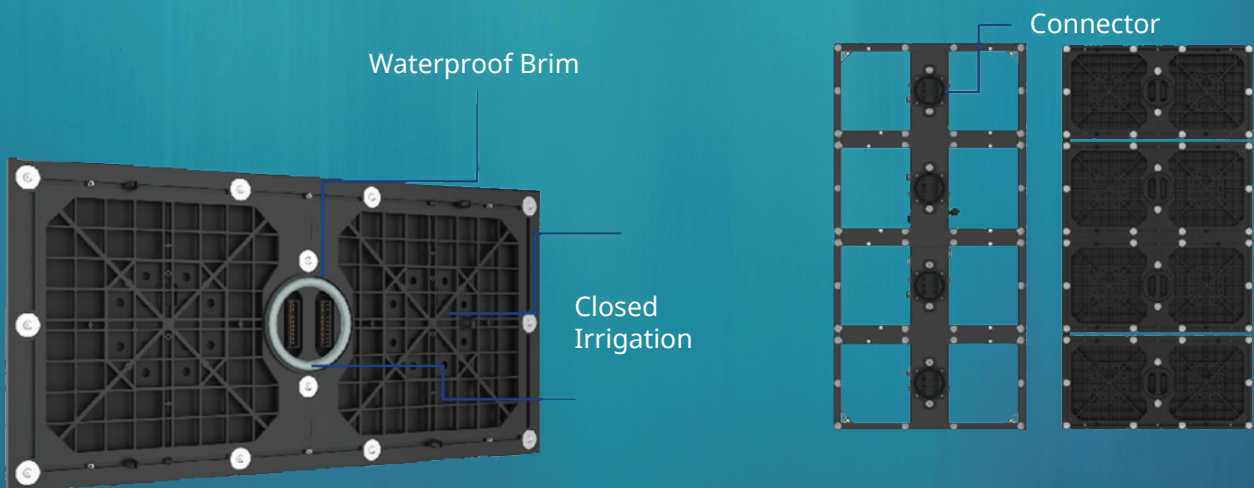
Uslim-O4

500 x 1000mm
OUTDOOR SOLUTION

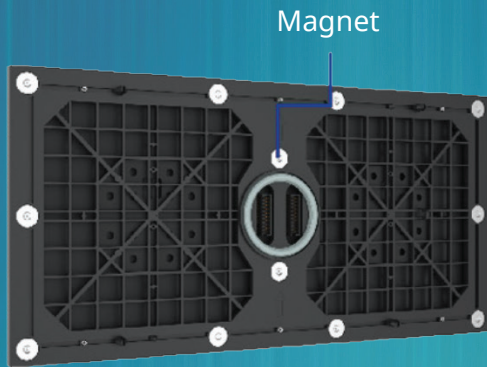
- Waterproof Technology
- Easy Operation.
- Great Heat Dissipation.
- Fully Front Serviceable.

Waterproof Technology

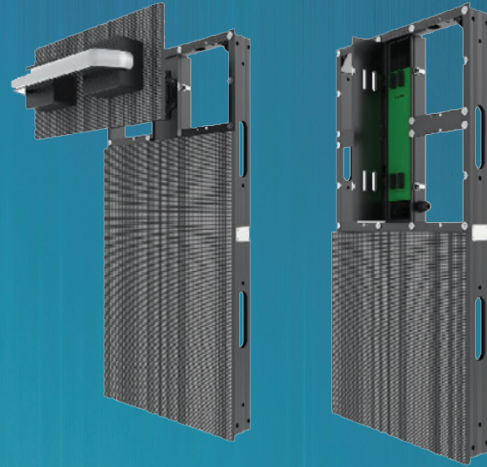
Triple protection of module: waterproof brim, closed irrigation and waterproof ring improve the overall performance of the Uslim-O. The whole panel has only four module connectors, which reduces the failure rate greatly.



Easy Operation & Front Serviceability



Module magnet design enables fast and easy maintenance.



After the module is removed, the power supply and card receiving can be maintained from the front by opening the power supply box.

Parameter	Value	
Pixel Pitch	4.8mm	
LED Type	3-in-1 SMD	
Brightness	4,500 cd/m ²	5,500 cd/m ² (Gold Version)
Pixels Per Panel	104 x 208 px	
Pixel Density	43,264 pixels/m ²	
Weight	32 kg (70.5 lbs)	
Module Size	W500mm x H250mm / (19.7in x 9.8in)	
Cabinet Size	W500mm x H1000mm x D86mm / (19.7in x 39.4in x 3.4in)	
Aspect Ratio	1:2	
Material	Die-casting Aluminum	
Ingress Protection	IP66(Front) / IP65(Rear)	
Operating Temperature/Humidity	-20°~ +50° / 10~90%RH	
Storage Temperature/Humidity	-30°~ +60° / 10~80%RH	
Maintenance	Intelligent Front Service	
Horizontal / Vertical Viewing Angle	140° / 120°	
Color Temperature	2000-9300K Adjustable	
Brightness Control	Manual/Automatic	
Contrast Ratio	3500:1	4000:1
Input Power (Max/Typical)	300W x 100W per panel	335W x 112W per panel
Video Frame Rate	50/60 Hz	
Refresh Rate	3840 Hz	
Input Voltage	100~240VAC	
Input Power Frequency	50~60 Hz	
Processing Depth	14 bit	
Calibration	Support brightness and chroma	
Mounting Configurations	Fixed	

Specifications are for reference only and are subject to change without notice.



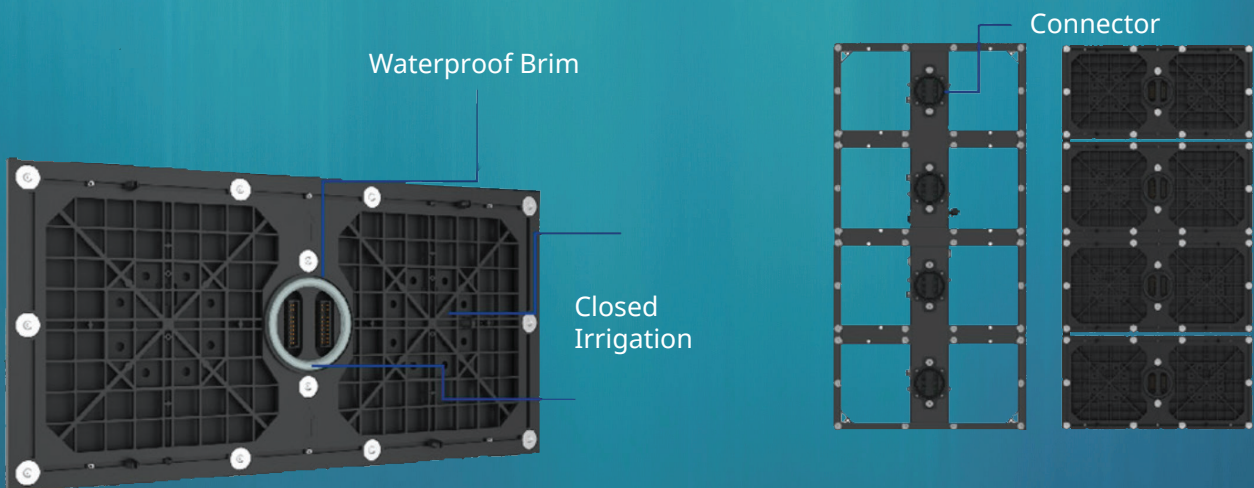
Unslim-O5

500 x 500mm
OUTDOOR SOLUTION

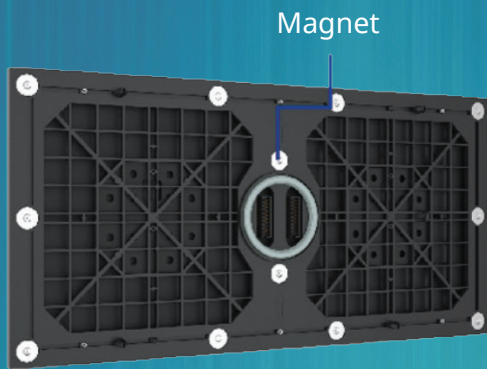
- Waterproof Technology
- Easy Operation.
- Great Heat Dissipation.
- Fully Front Serviceable.

Waterproof Technology

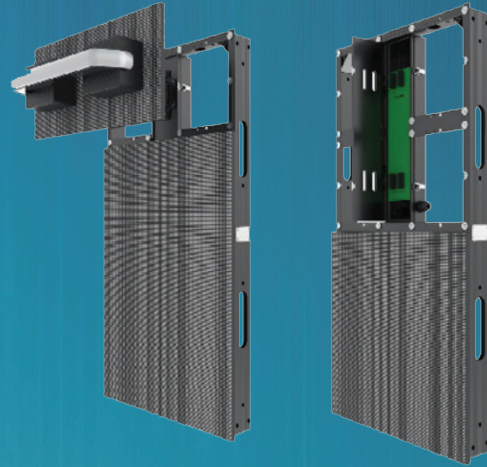
Triple protection of module: waterproof brim, closed irrigation and waterproof ring improve the overall performance of the Unslim-O. The whole panel has only four module connectors, which reduces the failure rate greatly.



Easy Operation & Front Serviceability



Module magnet design enables fast and easy maintenance.



After the module is removed, the power supply and card receiving can be maintained from the front by opening the power supply box.

Parameter	Value	
Pixel Pitch	5.95mm	
LED Type	3-in-1 SMD	
Brightness	5,000 cd/m ²	6,000 cd/m ² (Gold Version)
Pixels Per Panel	84 x 84 px	
Pixel Density	28,224 pixels/m ²	
Weight	34.4 kg (75.8 lbs)	
Module Size	W500mm x H250mm / (19.7in x 9.8in)	
Cabinet Size	W500mm x H500mm x D86mm / (19.7in x 19.7in x 3.4in)	
Aspect Ratio	1:1	
Material	Die-casting Aluminum	
Ingress Protection	IP66(Front) / IP65(Rear)	
Operating Temperature/Humidity	-20°~ +50° / 10~90%RH	
Storage Temperature/Humidity	-30°~ +60° / 10~80%RH	
Maintenance	Intelligent Front Service	
Horizontal / Vertical Viewing Angle	140° / 120°	
Color Temperature	2000-9300K Adjustable	
Brightness Control	Manual/Automatic	
Contrast Ratio	3500:1	4000:1
Input Power (Max/Typical)	138W x 46W per panel	170W x 57W per panel
Video Frame Rate	50/60 Hz	
Refresh Rate	3840 Hz	
Input Voltage	100~240VAC	
Input Power Frequency	50~60 Hz	
Processing Depth	14 bit	
Calibration	Support brightness and chroma	
Mounting Configurations	Fixed	

Specifications are for reference only and are subject to change without notice.