



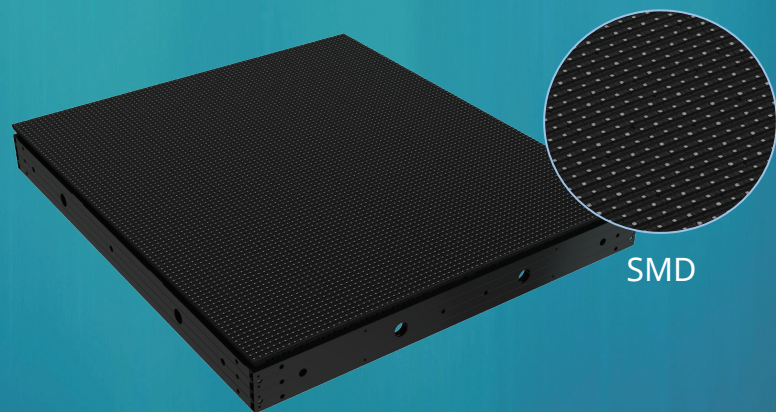
UsurfaceIII 6

800 x 900mm
OUTDOOR SOLUTION

- High Brightness, Up to SMD 8,000nits.
- High Contrast Ratio.
- Greater Wide Viewing Angle.
- Front and Rear Maintenance.

High Brightness & Contrast

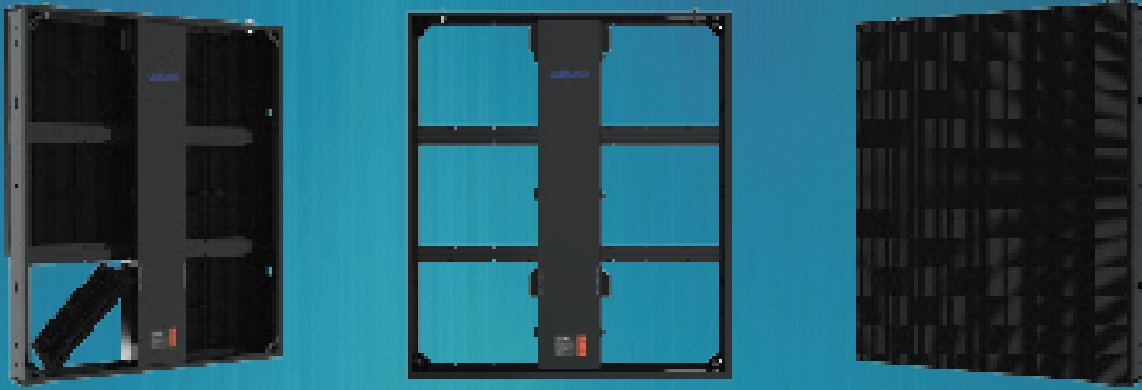
SMD creates a better viewing effect with less sunlight reflecting on the surface, and for added durability, the UsurfaceIII is waterproof.



Wide Viewing Angle

The viewing angle of SMD is overall wider than DIP. Wider viewing can reach a greater range of visibility to improve efficiency of advertising, with UsurfaceIII the possibilities are endless.

Front and Rear Maintenance



Front and rear maintenance makes for a much easier operation in different applications, and installation so easy that one individual can handle setup.

Parameter	Value	
Pixel Pitch	6.7mm	
LED Type	3-in-1 SMD	
Brightness	6500cd/m ² (nits)	8,000 cd/m ² (nits)
Pixels Per Panel	120 x 135 pixels	
Pixel Density	22,500 pixels/m ²	
Weight	23.0 kg (50.7 lbs)	20.9 kg (46.1 lbs)
Module Size	W400mm x H300mm (15.7in x 11.8in)	
Cabinet Size	W800mm x H900mm xD96mm (31.5in x 35.4in x 3.8in)	
Aspect Ratio	8:9	
Material	Die-casting Aluminum	
Ingress Protection	IP65	
Operating Temperature/Humidity	-20°~ +50° / 10~90%RH	
Storage Temperature/Humidity	-30°~ +60° / 10~80%RH	
Maintenance	Front / Rear	Front / Rear
Horizontal / Vertical Viewing Angle	140°/120°	
Color Temperature	2000-9300K Adjustable	
Brightness Control	Manual/Automatic	
Contrast Ratio	5500:1	7000:1
Input Power (Max/Typical)	650W/m ² / 217W/m ²	750W/m ² / 250W/m ²
Video Frame Rate	50/60 Hz	
Refresh Rate	1920 Hz	
Input Voltage	100~240VAC	
Input Power Frequency	50~60 Hz	
Input Signal	DVI/HDMI/VGA/SDI/DP/AV	
Lifespan	100,000 hours	
Mounting Configurations	Fixed	

Specifications are for reference only and are subject to change without notice.



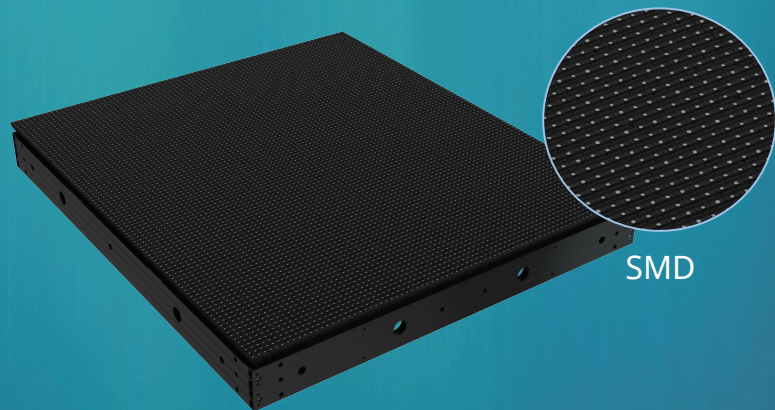
UsurfaceIII 6

800 x 1200mm
OUTDOOR SOLUTION

- High Brightness, Up to SMD 8,000nits.
- High Contrast Ratio.
- Greater Wide Viewing Angle.
- Front and Rear Maintenance.

High Brightness & Contrast

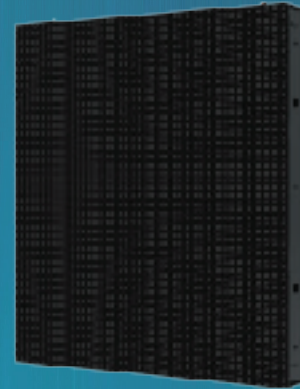
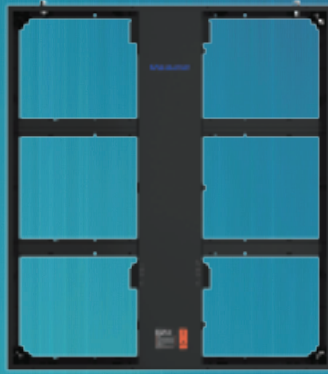
SMD creates a better viewing effect with less sunlight reflecting on the surface, and for added durability, the UsurfaceIII is waterproof.



Wide Viewing Angle

The viewing angle of SMD is overall wider than DIP. Wider viewing can reach a greater range of visibility to improve efficiency of advertising, with UsurfaceIII the possibilities are endless.

Front and Rear Maintenance



Front and rear maintenance makes for a much easier operation in different applications, and installation so easy that one individual can handle setup.

Parameter	Value	
Pixel Pitch	6.7mm	
LED Type	3-in-1 SMD	
Brightness	6500cd/m ² (nits)	8,000 cd/m ² (nits)
Pixels Per Panel	120 x 180 pixels	
Pixel Density	22,500 pixels/m ²	
Weight	33 kg (72.8 bs)	30 kg (66.1 lbs)
Module Size	W400mm x H300mm (15.7in x 11.8in)	
Cabinet Size	W800mm x H900mm xD96mm (31.5in x 35.4in x 3.8in)	
Aspect Ratio	2.3	
Material	Die-casting Aluminum	
Ingress Protection	IP65 (Front) / IP65 (Rear)	IP65 (Front) / IP54 (Rear)
Operating Temperature/Humidity	-20°~ +50° / 10~90%RH	
Storage Temperature/Humidity	-30°~ +60° / 10~80%RH	
Maintenance	Front / Rear	Front / Rear
Horizontal / Vertical Viewing Angle	140°/120°	
Color Temperature	2000-9300K Adjustable	
Brightness Control	Manual/Automatic	
Contrast Ratio	5500:1	7000:1
Input Power (Max/Typical)	650W/m ² / 217W/m ²	750W/m ² / 250W/m ²
Video Frame Rate	50/60 Hz	
Refresh Rate	3840 Hz	
Input Voltage	100~240VAC	
Input Power Frequency	50~60 Hz	
Input Signal	DVI/HDMI/VGA/SDI/DP/AV	
Lifespan	100,000 hours	
Mounting Configurations	Fixed	

Specifications are for reference only and are subject to change without notice.



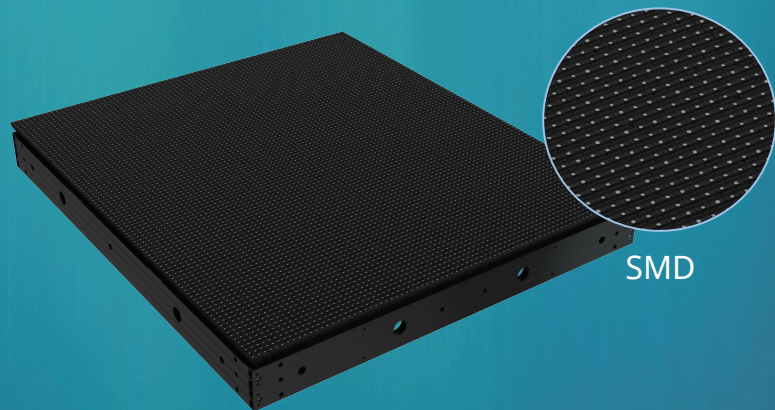
UsurfaceIII 6

1200 x 900mm
OUTDOOR SOLUTION

- High Brightness, Up to SMD 8,000nits.
- High Contrast Ratio.
- Greater Wide Viewing Angle.
- Front and Rear Maintenance.

High Brightness & Contrast

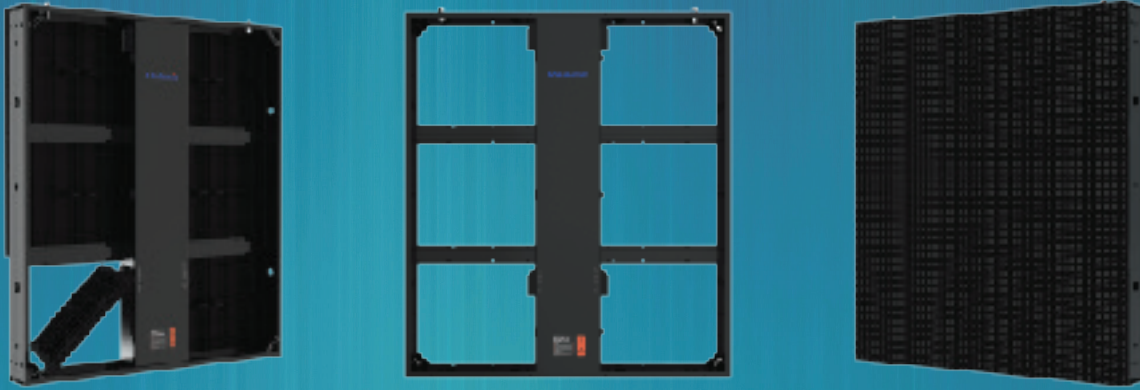
SMD creates a better viewing effect with less sunlight reflecting on the surface, and for added durability, the UsurfaceIII is waterproof.



Wide Viewing Angle

The viewing angle of SMD is overall wider than DIP. Wider viewing can reach a greater range of visibility to improve efficiency of advertising, with UsurfaceIII the possibilities are endless.

Front and Rear Maintenance



Front and rear maintenance makes for a much easier operation in different applications, and installation so easy that one individual can handle setup.

Parameter	Value	
Pixel Pitch	6.67mm	
LED Type	3-in-1 SMD	
Brightness	6500 cd/m ² (nits)	8,000 cd/m ² (nits)
Pixels Per Panel	180 x 135 pixels	
Pixel Density	22,500 pixels/m ²	
Weight	37.8 kg (83.3 lbs)	32.4 kg (71.4 lbs)
Module Size	W400mm x H300mm (15.7in x 11.8in)	
Cabinet Size	W1200mm x H900mm x D96mm (47.2in x 35.4in x 3.8in)	
Aspect Ratio	4:3	
Material	Die-casting Aluminum	
Ingress Protection	IP65	
Operating Temperature/Humidity	-20°~ +50° / 10~90%RH	
Storage Temperature/Humidity	-30°~ +60° / 10~80%RH	
Maintenance	Front / Rear	Front / Rear
Horizontal / Vertical Viewing Angle	140°/120°	
Color Temperature	2000-9500K Adjustable	
Brightness Control	Manual/Automatic	
Contrast Ratio	5500:1	7000:1
Input Power (Max/Typical)	650W/m ² / 217W/m ²	750W/m ² / 250W/m ²
Video Frame Rate	50/60 Hz	
Refresh Rate	3840 Hz	
Input Voltage	100~240VAC	
Input Power Frequency	50~60 Hz	
Input Signal	DVI/HDMI/VGA/SDI/DP/AV	
Lifespan	100,000 hours	
Mounting Configurations	Fixed	

Specifications are for reference only and are subject to change without notice.



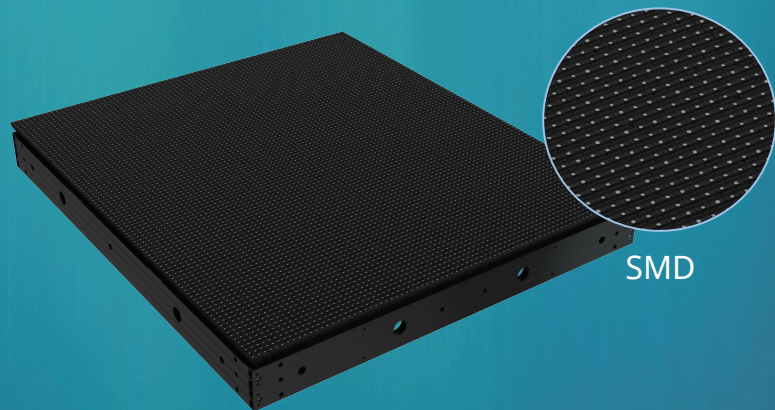
UsurfaceIII 6

1200 x 1200mm
OUTDOOR SOLUTION

- High Brightness, Up to SMD 8,000nits.
- High Contrast Ratio.
- Greater Wide Viewing Angle.
- Front and Rear Maintenance.

High Brightness & Contrast

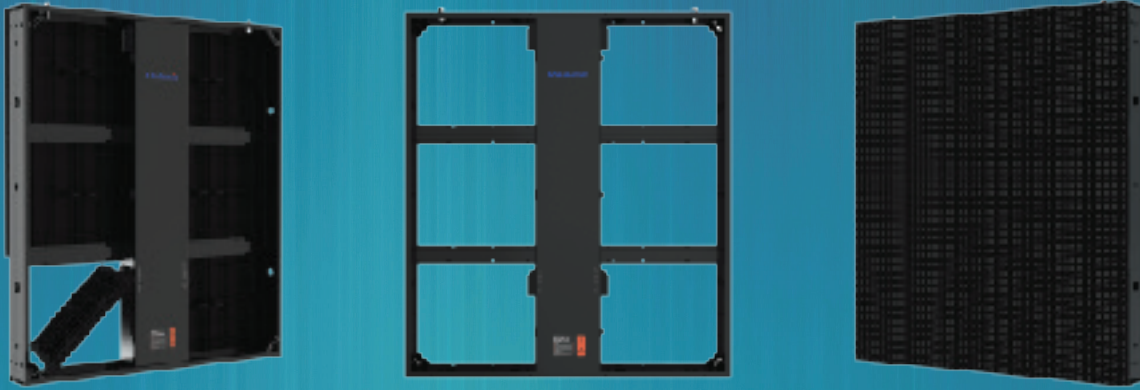
SMD creates a better viewing effect with less sunlight reflecting on the surface, and for added durability, the UsurfaceIII is waterproof.



Wide Viewing Angle

The viewing angle of SMD is overall wider than DIP. Wider viewing can reach a greater range of visibility to improve efficiency of advertising, with UsurfaceIII the possibilities are endless.

Front and Rear Maintenance



Front and rear maintenance makes for a much easier operation in different applications, and installation so easy that one individual can handle setup.

Parameter	Value	
Pixel Pitch	6.67mm	
LED Type	3-in-1 SMD	
Brightness	6500 cd/m ² (nits)	8,000 cd/m ² (nits)
Pixels Per Panel	180 x 180 pixels	
Pixel Density	22,500 pixels/m ²	
Weight	34.3 kg (75.6 lbs)	29.4 kg (64.8 lbs)
Module Size	W400mm x H300mm (15.7in x 11.8in)	
Cabinet Size	W1200mm x H1200mm xD96mm (47.2in x 47.2in x 3.8in)	
Aspect Ratio	1:1	
Material	Die-casting Aluminum	
Ingress Protection	IP65 (Front) / IP65 (Rear)	IP65 (Front) / IP54 (Rear)
Operating Temperature/Humidity	-20°~ +50° / 10~90%RH	
Storage Temperature/Humidity	-30°~ +60° / 10~80%RH	
Maintenance	Front / Rear	Front / Rear
Horizontal / Vertical Viewing Angle	140°/120°	
Color Temperature	2000-9500K Adjustable	
Brightness Control	Manual/Automatic	
Contrast Ratio	5500:1	7000:1
Input Power (Max/Typical)	650W/m ² / 217W/m ²	750W/m ² / 250W/m ²
Video Frame Rate	50/60 Hz	
Refresh Rate	3840 Hz	
Input Voltage	100~240VAC	
Input Power Frequency	50~60 Hz	
Input Signal	DVI/HDMI/VGA/SDI/DP/AV	
Lifespan	100,000 hours	
Mounting Configurations	Fixed	

Specifications are for reference only and are subject to change without notice.



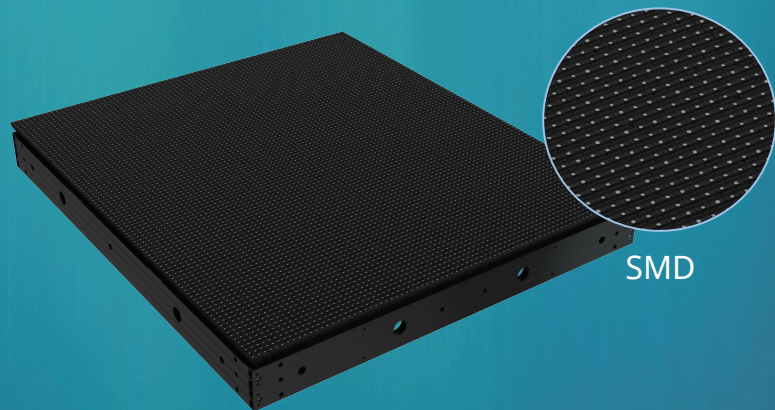
UsurfaceIII 8

800 x 900mm
OUTDOOR SOLUTION

- High Brightness, Up to SMD 8,000nits.
- High Contrast Ratio.
- Greater Wide Viewing Angle.
- Front and Rear Maintenance.

High Brightness & Contrast

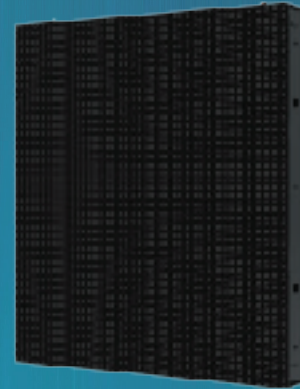
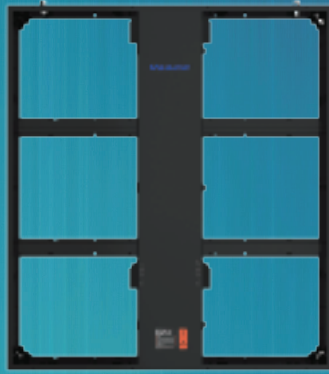
SMD creates a better viewing effect with less sunlight reflecting on the surface, and for added durability, the UsurfaceIII is waterproof.



Wide Viewing Angle

The viewing angle of SMD is overall wider than DIP. Wider viewing can reach a greater range of visibility to improve efficiency of advertising, with UsurfaceIII the possibilities are endless.

Front and Rear Maintenance



Front and rear maintenance makes for a much easier operation in different applications, and installation so easy that one individual can handle setup.

Parameter	Value	
Pixel Pitch	8.33mm	
LED Type	3-in-1 SMD	
Brightness	6500 cd/m ² (nits)	8,000 cd/m ² (nits)
Pixels Per Panel	96 x 108 pixels	
Pixel Density	14,400 pixels/m ²	
Weight	23.0 kg (50.7 lbs)	20.9 kg (46.1 lbs)
Module Size	W400mm x H300mm (15.7in x 11.8in)	
Cabinet Size	W800mm x H900mm x D96mm (31.5in x 35.4in x 3.8in)	
Aspect Ratio	8:9	
Material	Die-casting Aluminum	
Ingress Protection	IP65	
Operating Temperature/Humidity	-20°~ +50° / 10~90%RH	
Storage Temperature/Humidity	-30°~ +60° / 10~80%RH	
Maintenance	Front / Rear	Front / Rear
Horizontal / Vertical Viewing Angle	140°/120°	
Color Temperature	2000-9300K Adjustable	
Brightness Control	Manual/Automatic	
Contrast Ratio	5500:1	7000:1
Input Power (Max/Typical)	650W/m ² / 217W/m ²	750W/m ² / 250W/m ²
Video Frame Rate	50/60 Hz	
Refresh Rate	1920 Hz	
Input Voltage	100~240VAC	
Input Power Frequency	50~60 Hz	
Input Signal	DVI/HDMI/VGA/SDI/DP/AV	
Lifespan	100,000 hours	
Mounting Configurations	Fixed	

Specifications are for reference only and are subject to change without notice.



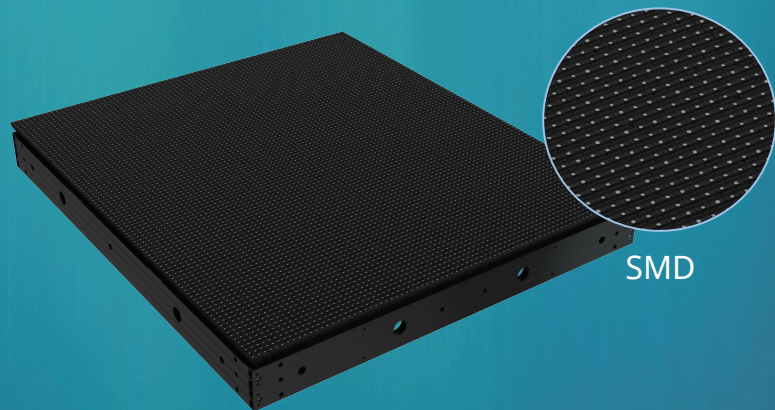
UsurfaceIII 8

800 x 1200mm
OUTDOOR SOLUTION

- High Brightness, Up to SMD 8,000nits.
- High Contrast Ratio.
- Greater Wide Viewing Angle.
- Front and Rear Maintenance.

High Brightness & Contrast

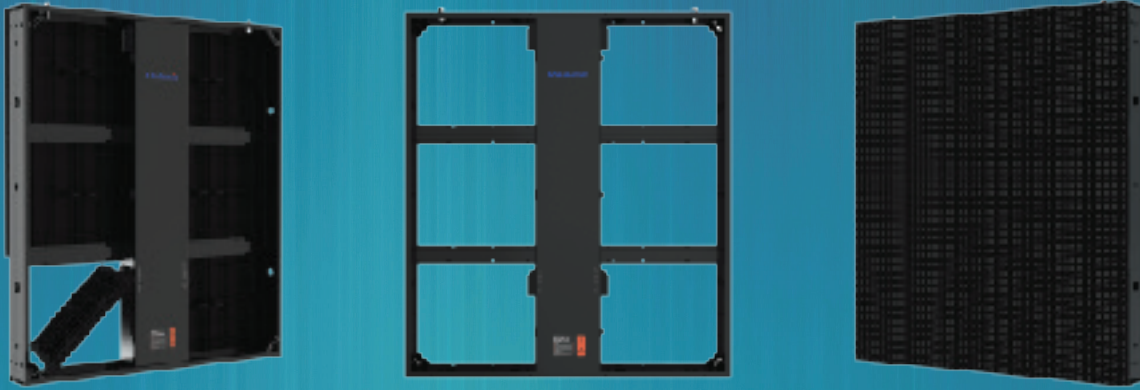
SMD creates a better viewing effect with less sunlight reflecting on the surface, and for added durability, the UsurfaceIII is waterproof.



Wide Viewing Angle

The viewing angle of SMD is overall wider than DIP. Wider viewing can reach a greater range of visibility to improve efficiency of advertising, with UsurfaceIII the possibilities are endless.

Front and Rear Maintenance



Front and rear maintenance makes for a much easier operation in different applications, and installation so easy that one individual can handle setup.

Parameter	Value	
Pixel Pitch	8.33mm	
LED Type	3-in-1 SMD	
Brightness	6500 cd/m ² (nits)	8,000 cd/m ² (nits)
Pixels Per Panel	96 x 144 pixels	
Pixel Density	14,400 pixels/m ²	
Weight	31.7 kg (69.9 lbs)	28.8 kg (63.5 lbs)
Module Size	W400mm x H300mm (15.7in x 11.8in)	
Cabinet Size	W800mm x H1200mm x D96mm (31.5in x 47.24in x 3.8in)	
Aspect Ratio	2:3	
Material	Die-casting Aluminum	
Ingress Protection	IP65	
Operating Temperature/Humidity	-20°~ +50° / 10~90%RH	
Storage Temperature/Humidity	-30°~ +60° / 10~80%RH	
Maintenance	Front / Rear	Front / Rear
Horizontal / Vertical Viewing Angle	140°/120°	
Color Temperature	2000-9300K Adjustable	
Brightness Control	Manual/Automatic	
Contrast Ratio	5500:1	7000:1
Input Power (Max/Typical)	650W/m ² / 217W/m ²	750W/m ² / 250W/m ²
Video Frame Rate	50/60 Hz	
Refresh Rate	3840 Hz	
Input Voltage	100~240VAC	
Input Power Frequency	50~60 Hz	
Input Signal	DVI/HDMI/VGA/SDI/DP/AV	
Lifespan	100,000 hours	
Mounting Configurations	Fixed	

Specifications are for reference only and are subject to change without notice.



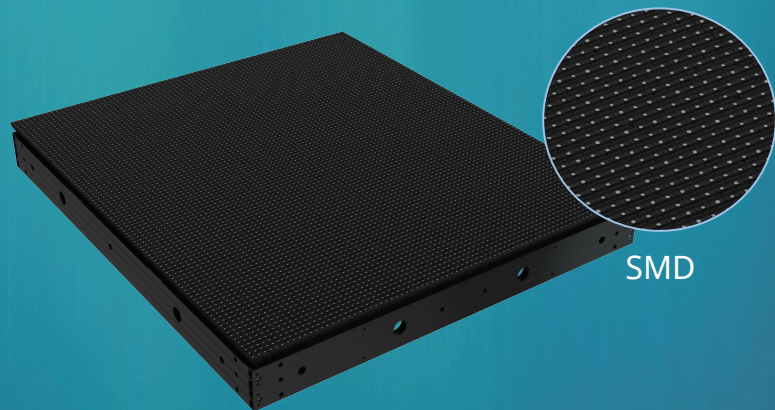
UsurfaceIII 8

1200 x 900mm
OUTDOOR SOLUTION

- High Brightness, Up to SMD 8,000nits.
- High Contrast Ratio.
- Greater Wide Viewing Angle.
- Front and Rear Maintenance.

High Brightness & Contrast

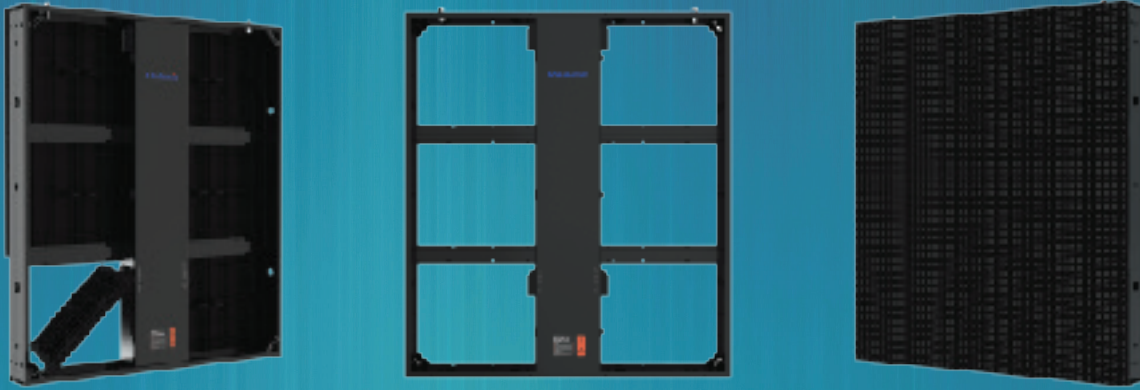
SMD creates a better viewing effect with less sunlight reflecting on the surface, and for added durability, the UsurfaceIII is waterproof.



Wide Viewing Angle

The viewing angle of SMD is overall wider than DIP. Wider viewing can reach a greater range of visibility to improve efficiency of advertising, with UsurfaceIII the possibilities are endless.

Front and Rear Maintenance



Front and rear maintenance makes for a much easier operation in different applications, and installation so easy that one individual can handle setup.

Parameter	Value	
Pixel Pitch	8.33mm	
LED Type	3-in-1 SMD	
Brightness	6500 cd/m ² (nits)	8,000 cd/m ² (nits)
Pixels Per Panel	96 x 144 pixels	
Pixel Density	14,400 pixels/m ²	
Weight	37.8 kg (83.3 lbs)	32.4 kg (71.4 lbs)
Module Size	W400mm x H300mm (15.7in x 11.8in)	
Cabinet Size	W1200mm x H900mm x D96mm (31.5in x 35.4in x 3.8in)	
Aspect Ratio	4:3	
Material	Die-casting Aluminum	
Ingress Protection	IP65	
Operating Temperature/Humidity	-20°~ +50° / 10~90%RH	
Storage Temperature/Humidity	-30°~ +60° / 10~80%RH	
Maintenance	Front / Rear	Front / Rear
Horizontal / Vertical Viewing Angle	140°/120°	
Color Temperature	2000-9300K Adjustable	
Brightness Control	Manual/Automatic	
Contrast Ratio	5500:1	7000:1
Input Power (Max/Typical)	650W/m ² / 217W/m ²	750W/m ² / 250W/m ²
Video Frame Rate	50/60 Hz	
Refresh Rate	3840 Hz	
Input Voltage	100~240VAC	
Input Power Frequency	50~60 Hz	
Input Signal	DVI/HDMI/VGA/SDI/DP/AV	
Lifespan	100,000 hours	
Mounting Configurations	Fixed	

Specifications are for reference only and are subject to change without notice.



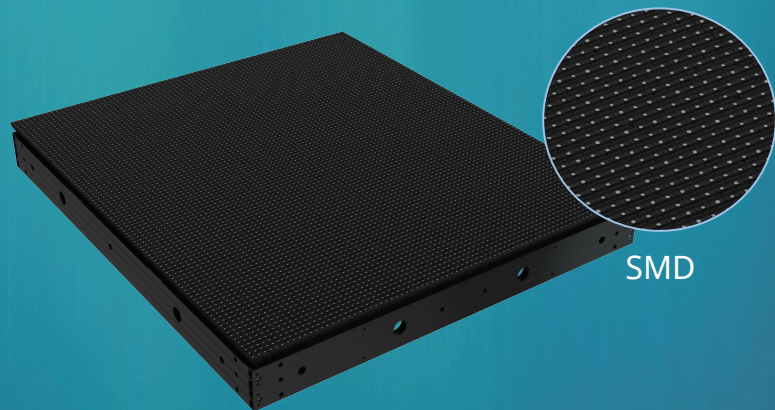
UsurfaceIII 8

1200 x 1200mm
OUTDOOR SOLUTION

- High Brightness, Up to SMD 8,000nits.
- High Contrast Ratio.
- Greater Wide Viewing Angle.
- Front and Rear Maintenance.

High Brightness & Contrast

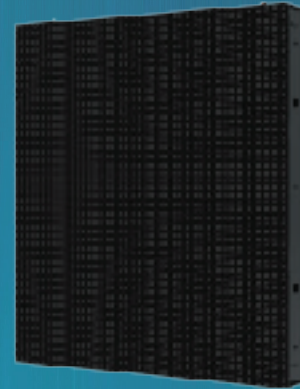
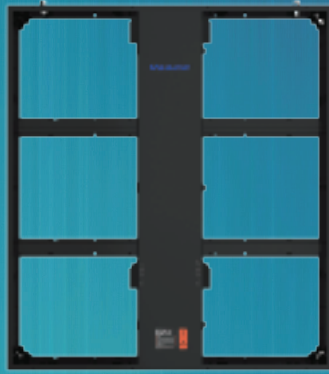
SMD creates a better viewing effect with less sunlight reflecting on the surface, and for added durability, the UsurfaceIII is waterproof.



Wide Viewing Angle

The viewing angle of SMD is overall wider than DIP. Wider viewing can reach a greater range of visibility to improve efficiency of advertising, with UsurfaceIII the possibilities are endless.

Front and Rear Maintenance



Front and rear maintenance makes for a much easier operation in different applications, and installation so easy that one individual can handle setup.

Parameter	Value	
Pixel Pitch	8.33mm	
LED Type	3-in-1 SMD	
Brightness	6500 cd/m ² (nits)	8,000 cd/m ² (nits)
Pixels Per Panel	144 x 144 pixels	
Pixel Density	14,400 pixels/m ²	
Weight	49.4 kg (108.9 lbs)	43.8 kg (96.6 lbs)
Module Size	W400mm x H300mm (15.7in x 11.8in)	
Cabinet Size	W1200mm x H1200mm x D96mm (31.5in x 31.5in x 3.8in)	
Aspect Ratio	1:1	
Material	Die-casting Aluminum	
Ingress Protection	IP65	
Operating Temperature/Humidity	-20°~ +50° / 10~90%RH	
Storage Temperature/Humidity	-30°~ +60° / 10~80%RH	
Maintenance	Front / Rear	Front / Rear
Horizontal / Vertical Viewing Angle	140°/120°	
Color Temperature	2000-9300K Adjustable	
Brightness Control	Manual/Automatic	
Contrast Ratio	5500:1	7000:1
Input Power (Max/Typical)	650W/m ² / 217W/m ²	750W/m ² / 250W/m ²
Video Frame Rate	50/60 Hz	
Refresh Rate	3840 Hz	
Input Voltage	100~240VAC	
Input Power Frequency	50~60 Hz	
Input Signal	DVI/HDMI/VGA/SDI/DP/AV	
Lifespan	100,000 hours	
Mounting Configurations	Fixed	

Specifications are for reference only and are subject to change without notice.



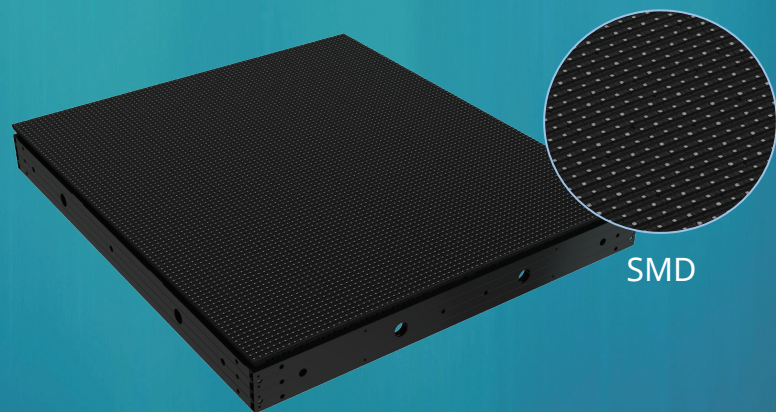
UsurfaceIII 10

800 x 900mm
OUTDOOR SOLUTION

- High Brightness, Up to SMD 8,000nits.
- High Contrast Ratio.
- Greater Wide Viewing Angle.
- Front and Rear Maintenance.

High Brightness & Contrast

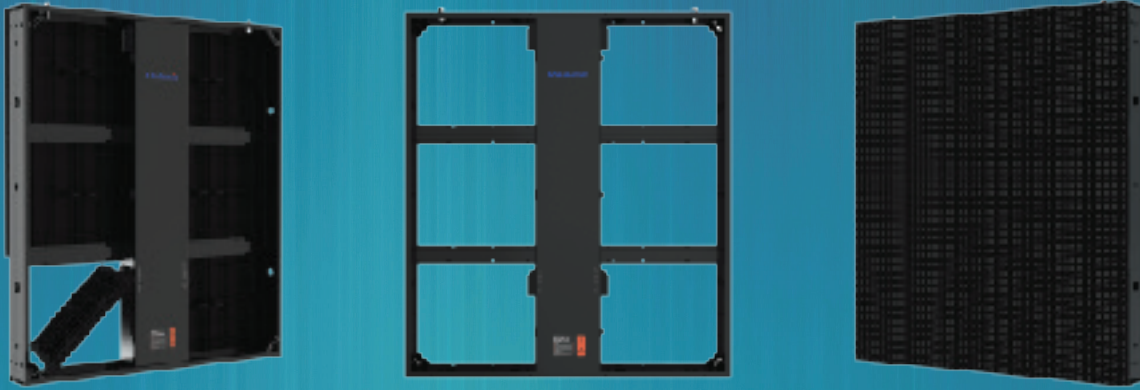
SMD creates a better viewing effect with less sunlight reflecting on the surface, and for added durability, the UsurfaceIII is waterproof.



Wide Viewing Angle

The viewing angle of SMD is overall wider than DIP. Wider viewing can reach a greater range of visibility to improve efficiency of advertising, with UsurfaceIII the possibilities are endless.

Front and Rear Maintenance



Front and rear maintenance makes for a much easier operation in different applications, and installation so easy that one individual can handle setup.

Parameter	Value	
Pixel Pitch	10mm	
LED Type	3-in-1 SMD	
Brightness	6,500 cd/m ² (nits)	8,000 cd/m ² (nits)
Pixels Per Panel	80 x 90 pixels	
Pixel Density	10,000 pixels/m ²	
Weight	23.0 kg (50.7 lbs)	20.9 kg (46.1 lbs)
Module Size	W400mm x H300mm (15.7in x 11.8in)	
Cabinet Size	W800mm x H900mm x D96mm (31.5in x 35.4in x 3.8in)	
Aspect Ratio	8:9	
Material	Die-casting Aluminum	
Ingress Protection	IP65	
Operating Temperature/Humidity	-20°~ +50° / 10~90%RH	
Storage Temperature/Humidity	-30°~ +60° / 10~80%RH	
Maintenance	Front / Rear	
Horizontal / Vertical Viewing Angle	140°/120°	
Color Temperature	2000 - 9300K Adjustable	
Brightness Control	Manual/Automatic	
Contrast Ratio	8000:1	
Input Power (Max/Typical)	650W/m ² / 217W/m ²	750W/m ² / 250W/m ²
Video Frame Rate	50/60 Hz	
Refresh Rate	1920 Hz	
Input Voltage	100~240VAC	
Input Power Frequency	50~60 Hz	
Input Signal	DVI/HDMI/VGA/SDI/DP/AV	
Lifespan	100,000 hours	
Mounting Configurations	Fixed	

Specifications are for reference only and are subject to change without notice.



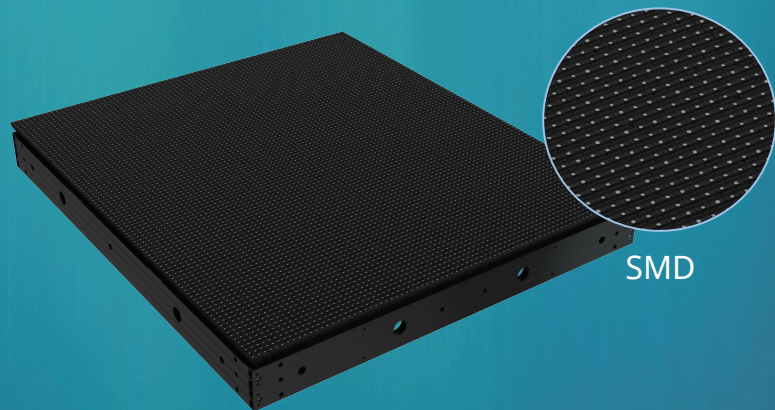
UsurfaceIII 10

800 x 1200mm
OUTDOOR SOLUTION

- High Brightness, Up to SMD 8,000nits.
- High Contrast Ratio.
- Greater Wide Viewing Angle.
- Front and Rear Maintenance.

High Brightness & Contrast

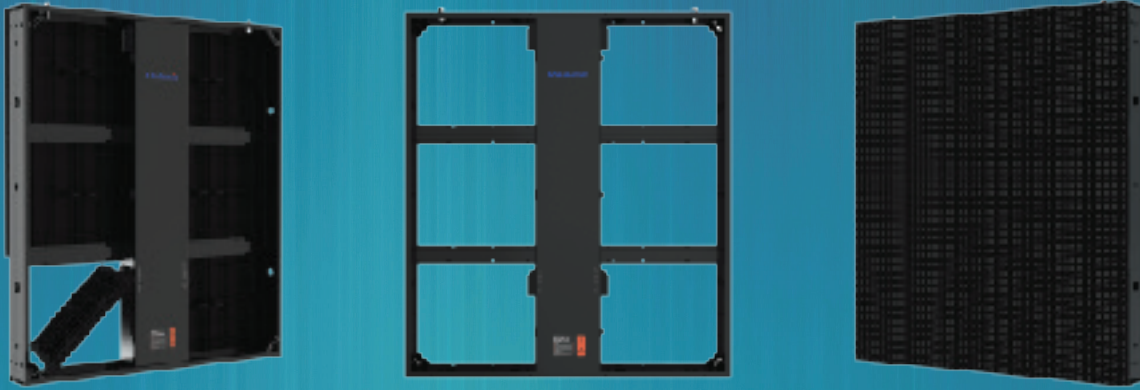
SMD creates a better viewing effect with less sunlight reflecting on the surface, and for added durability, the UsurfaceIII is waterproof.



Wide Viewing Angle

The viewing angle of SMD is overall wider than DIP. Wider viewing can reach a greater range of visibility to improve efficiency of advertising, with UsurfaceIII the possibilities are endless.

Front and Rear Maintenance



Front and rear maintenance makes for a much easier operation in different applications, and installation so easy that one individual can handle setup.

Parameter	Value	
Pixel Pitch	10mm	
LED Type	3-in-1 SMD	
Brightness	6,500 cd/m ² (nits)	8,000 cd/m ² (nits)
Pixels Per Panel	80 x 120 pixels	
Pixel Density	10,000 pixels/m ²	
Weight	31.7 kg (69.9 lbs)	28.8 kg (63.5 lbs)
Module Size	W400mm x H300mm (15.7in x 11.8in)	
Cabinet Size	W800mm x H1200mm x D96mm (31.5in x 47.2in x 3.8in)	
Aspect Ratio	2:3	
Material	Die-casting Aluminum	
Ingress Protection	IP65(Front)/IP65(Rear) / IP65(Front)/IP54(Rear)	
Operating Temperature/Humidity	-20°~ +50° / 10~90%RH	
Storage Temperature/Humidity	-30°~ +60° / 10~80%RH	
Maintenance	Front / Rear	
Horizontal / Vertical Viewing Angle	140°/120°	
Color Temperature	2000 - 9300K Adjustable	
Brightness Control	Manual/Automatic	
Contrast Ratio	8000:1	1200:1
Input Power (Max/Typical)	650W/m ² / 217W/m ²	750W/m ² / 250W/m ²
Video Frame Rate	50/60 Hz	
Refresh Rate	3840 Hz	
Input Voltage	100~240VAC	
Input Power Frequency	50~60 Hz	
Input Signal	DVI/HDMI/VGA/SDI/DP/AV	
Lifespan	100,000 hours	
Mounting Configurations	Fixed	

Specifications are for reference only and are subject to change without notice.



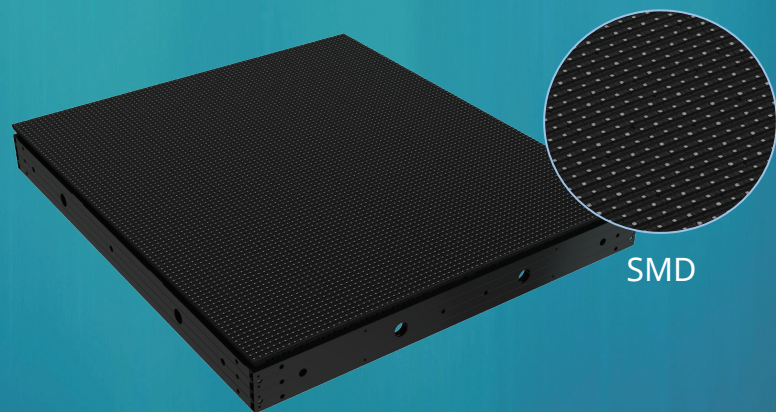
UsurfaceIII 10

1200 x 900mm
OUTDOOR SOLUTION

- High Brightness, Up to SMD 8,000nits.
- High Contrast Ratio.
- Greater Wide Viewing Angle.
- Front and Rear Maintenance.

High Brightness & Contrast

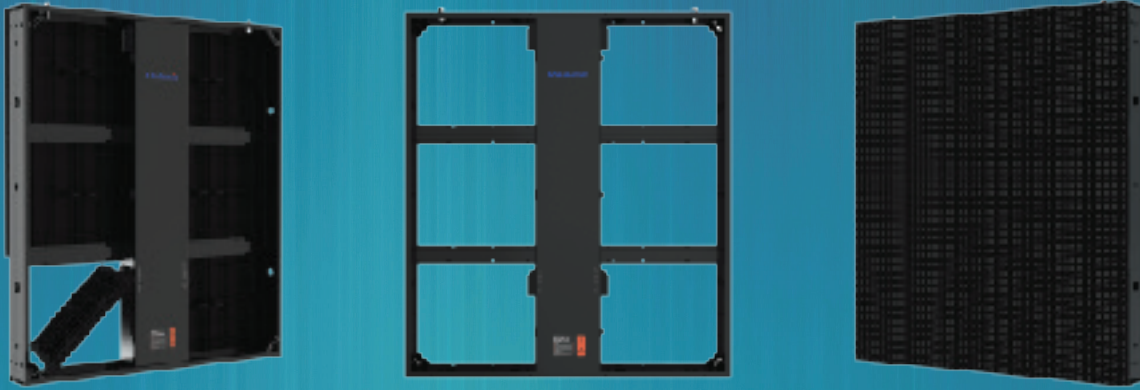
SMD creates a better viewing effect with less sunlight reflecting on the surface, and for added durability, the UsurfaceIII is waterproof.



Wide Viewing Angle

The viewing angle of SMD is overall wider than DIP. Wider viewing can reach a greater range of visibility to improve efficiency of advertising, with UsurfaceIII the possibilities are endless.

Front and Rear Maintenance



Front and rear maintenance makes for a much easier operation in different applications, and installation so easy that one individual can handle setup.

Parameter	Value	
Pixel Pitch	10mm	
LED Type	3-in-1 SMD	
Brightness	6,500 cd/m ² (nits)	8,000 cd/m ² (nits)
Pixels Per Panel	120 x 90 pixels	
Pixel Density	10,000 pixels/m ²	
Weight	37.8 kg (83.3 lbs)	32.4 kg (71.4 lbs)
Module Size	W400mm x H300mm (15.7in x 11.8in)	
Cabinet Size	W1200mm x H900mm x D96mm (47.2in x 35.4in x 3.8in)	
Aspect Ratio	4:3	
Material	Die-casting Aluminum	
Ingress Protection	IP65(Front)/IP65(Rear) / IP65(Front)/IP54(Rear)	
Operating Temperature/Humidity	-20°~ +50° / 10~90%RH	
Storage Temperature/Humidity	-30°~ +60° / 10~80%RH	
Maintenance	Front / Rear	
Horizontal / Vertical Viewing Angle	140°/120°	
Color Temperature	2000 - 9300K Adjustable	
Brightness Control	Manual/Automatic	
Contrast Ratio	8000:1	1200:1
Input Power (Max/Typical)	650W/m ² / 217W/m ²	750W/m ² / 250W/m ²
Video Frame Rate	50/60 Hz	
Refresh Rate	3840 Hz	
Input Voltage	100~240VAC	
Input Power Frequency	50~60 Hz	
Input Signal	DVI/HDMI/VGA/SDI/DP/AV	
Lifespan	100,000 hours	
Mounting Configurations	Fixed	

Specifications are for reference only and are subject to change without notice.



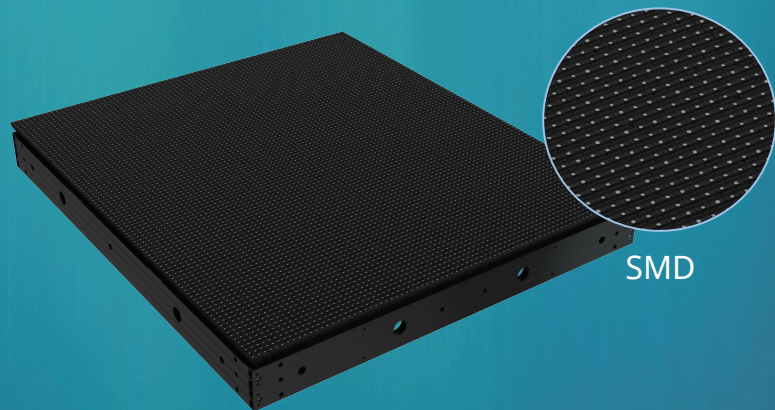
UsurfaceIII 10

1200 x 1200mm
OUTDOOR SOLUTION

- High Brightness, Up to SMD 8,000nits.
- High Contrast Ratio.
- Greater Wide Viewing Angle.
- Front and Rear Maintenance.

High Brightness & Contrast

SMD creates a better viewing effect with less sunlight reflecting on the surface, and for added durability, the UsurfaceIII is waterproof.



Wide Viewing Angle

The viewing angle of SMD is overall wider than DIP. Wider viewing can reach a greater range of visibility to improve efficiency of advertising, with UsurfaceIII the possibilities are endless.

Front and Rear Maintenance



Front and rear maintenance makes for a much easier operation in different applications, and installation so easy that one individual can handle setup.

Parameter	Value	
Pixel Pitch	10mm	
LED Type	3-in-1 SMD	
Brightness	8,000 cd/m ² (nits)	
Pixels Per Panel	120 x 120 pixels	
Pixel Density	10,000 pixels/m ²	
Weight	49.4 kg (108.9 lbs)	43.8 kg (96.6 lbs)
Module Size	W400mm x H300mm (15.7in x 11.8in)	
Cabinet Size	W1200mm x H1200mm x D96mm (31.5in x 31.5in x 3.8in)	
Aspect Ratio	1:1	
Material	Die-casting Aluminum	
Ingress Protection	IP65(Front)/IP65(Rear)	IP65(Front)/IP54(Rear)
Operating Temperature/Humidity	-20°~ +50° / 10~90%RH	
Storage Temperature/Humidity	-30°~ +60° / 10~80%RH	
Maintenance	Front	Rear
Horizontal / Vertical Viewing Angle	140°/120°	
Color Temperature	2000-9300K Adjustable	
Brightness Control	Manual/Automatic	
Contrast Ratio	8000:1	1200:1
Input Power (Max/Typical)	650W/m ² / 217W/m ²	750W/m ² / 250W/m ²
Video Frame Rate	50/60 Hz	
Refresh Rate	3840 Hz	
Input Voltage	100~240VAC	
Input Power Frequency	50~60 Hz	
Input Signal	DVI/HDMI/VGA/SDI/DP/AV	
Lifespan	100,000 hours	
Mounting Configurations	Fixed	

Specifications are for reference only and are subject to change without notice.



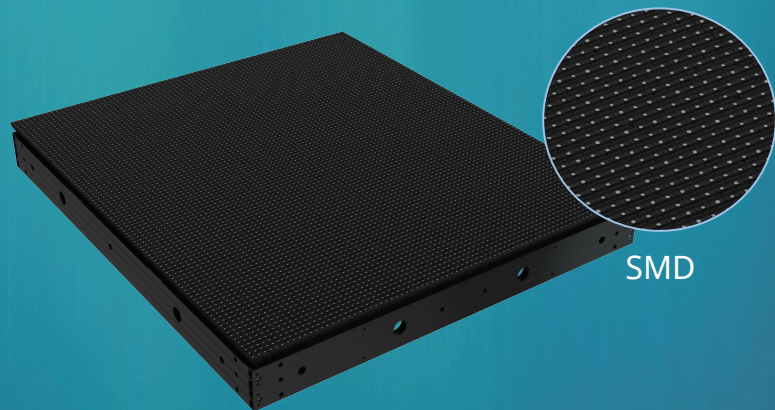
UsurfaceIII 16

800 x 900mm
OUTDOOR SOLUTION

- High Brightness, Up to SMD 8,000nits.
- High Contrast Ratio.
- Greater Wide Viewing Angle.
- Front and Rear Maintenance.

High Brightness & Contrast

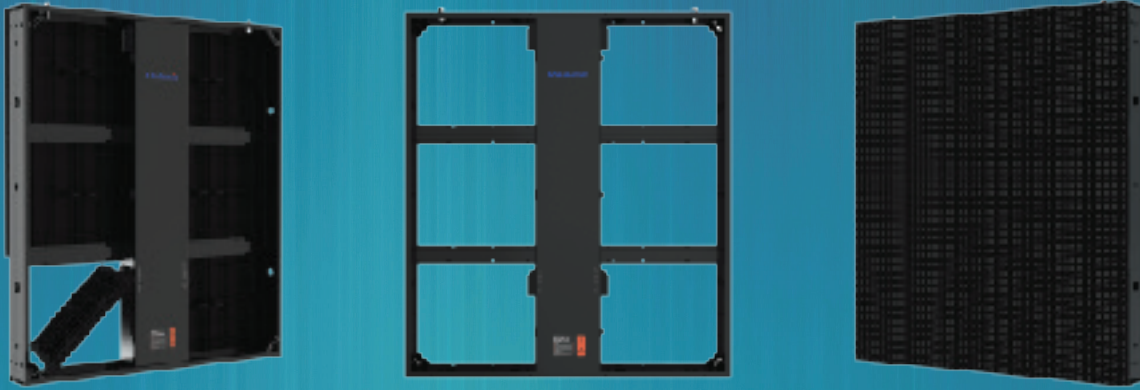
SMD creates a better viewing effect with less sunlight reflecting on the surface, and for added durability, the UsurfaceIII is waterproof.



Wide Viewing Angle

The viewing angle of SMD is overall wider than DIP. Wider viewing can reach a greater range of visibility to improve efficiency of advertising, with UsurfaceIII the possibilities are endless.

Front and Rear Maintenance



Front and rear maintenance makes for a much easier operation in different applications, and installation so easy that one individual can handle setup.

Parameter	Value	
Pixel Pitch	16.67mm	
LED Type	3-in-1 SMD	
Brightness	6500cd/m ² (nits)	8,000 cd/m ² (nits)
Pixels Per Panel	48 x 54 pixels	
Pixel Density	3,600 pixels/m ²	
Weight	23.0 kg (50.7 lbs)	20.9 kg (46.1 lbs)
Module Size	W400mm x H300mm (15.7in x 11.8in)	
Cabinet Size	W800mm x H900mm xD96mm (31.5in x 35.4in x 3.8in)	
Aspect Ratio	8:9	
Material	Die-casting Aluminum	
Ingress Protection	IP65	IP65(Front) IP54(Rear)
Operating Temperature/Humidity	-20°~ +50° / 10~90%RH	
Storage Temperature/Humidity	-30°~ +60° / 10~80%RH	
Maintenance	Front	Rear
Horizontal / Vertical Viewing Angle	140°/120°	
Color Temperature	2000-9300K Adjustable	
Brightness Control	Manual/Automatic	
Contrast Ratio	8000:1	12000:1
Input Power (Max/Typical)	650W/m ² / 217W/m ²	750W/m ² / 250W/m ²
Video Frame Rate	50/60 Hz	
Refresh Rate	1920 Hz	
Input Voltage	100~240VAC	
Input Power Frequency	50~60 Hz	
Input Signal	DVI/HDMI/VGA/SDI/DP/AV	
Lifespan	100,000 hours	
Mounting Configurations	Fixed	

Specifications are for reference only and are subject to change without notice.



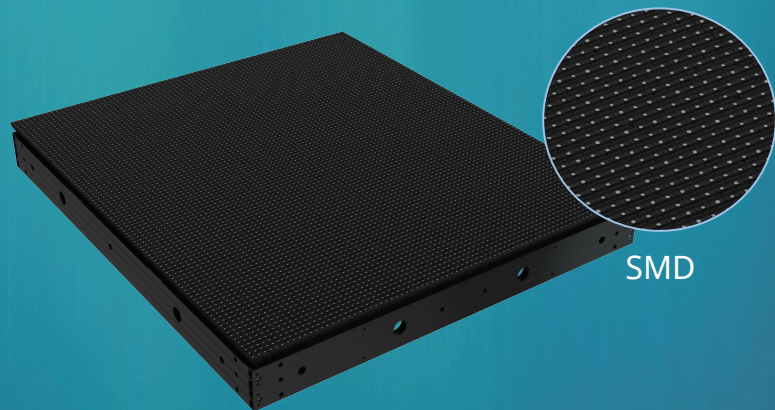
USurfaceIII 16

800 x 1200mm
OUTDOOR SOLUTION

- High Brightness, Up to SMD 8,000nits.
- High Contrast Ratio.
- Greater Wide Viewing Angle.
- Front and Rear Maintenance.

High Brightness & Contrast

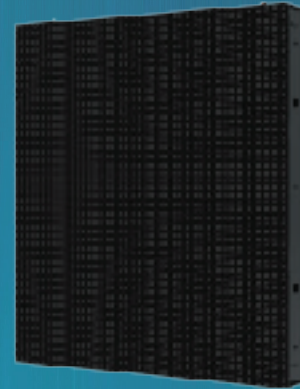
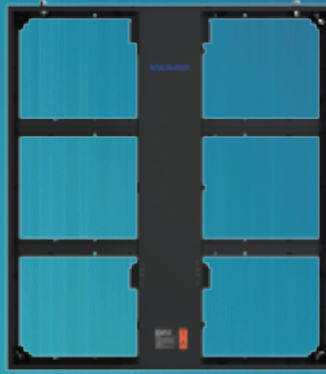
SMD creates a better viewing effect with less sunlight reflecting on the surface, and for added durability, the USurfaceIII is waterproof.



Wide Viewing Angle

The viewing angle of SMD is overall wider than DIP. Wider viewing can reach a greater range of visibility to improve efficiency of advertising, with USurfaceIII the possibilities are endless.

Front and Rear Maintenance



Front and rear maintenance makes for a much easier operation in different applications, and installation so easy that one individual can handle setup.

Parameter	Value	
Pixel Pitch	16.67mm	
LED Type	3-in-1 SMD	
Brightness	6500cd/m ² (nits)	8,000 cd/m ² (nits)
Pixels Per Panel	48 x 72 pixels	
Pixel Density	3,600 pixels/m ²	
Weight	31.7 kg (69.9 lbs)	28.8 kg (63.5 lbs)
Module Size	W400mm x H300mm (15.7in x 11.8in)	
Cabinet Size	W800mm x H1200mm x D96mm (31.5in x 47.2in x 3.8in)	
Aspect Ratio	2:3	
Material	Die-casting Aluminum	
Ingress Protection	IP65(Front)IP54(Rear)	IP65(Front)IP54(Rear)
Operating Temperature/Humidity	-20°~ +50° / 10~90%RH	
Storage Temperature/Humidity	-30°~ +60° / 10~80%RH	
Maintenance	Front	Rear
Horizontal / Vertical Viewing Angle	140°/120°	
Color Temperature	2000-9300K Adjustable	
Brightness Control	Manual/Automatic	
Contrast Ratio	8000:1	12000:1
Input Power (Max/Typical)	650W/m ² / 217W/m ²	750W/m ² / 250W/m ²
Video Frame Rate	50/60 Hz	
Refresh Rate	3840 Hz	
Input Voltage	100~240VAC	
Input Power Frequency	50~60 Hz	
Input Signal	DVI/HDMI/VGA/SDI/DP/AV	
Lifespan	100,000 hours	
Mounting Configurations	Fixed	

Specifications are for reference only and are subject to change without notice.



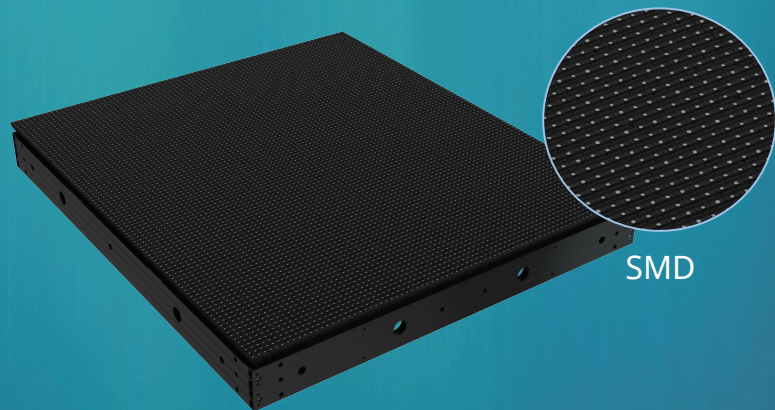
UsurfaceIII 16

1200 x 900mm
OUTDOOR SOLUTION

- High Brightness, Up to SMD 8,000nits.
- High Contrast Ratio.
- Greater Wide Viewing Angle.
- Front and Rear Maintenance.

High Brightness & Contrast

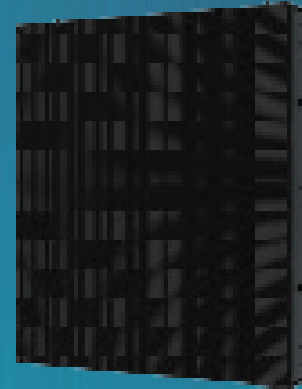
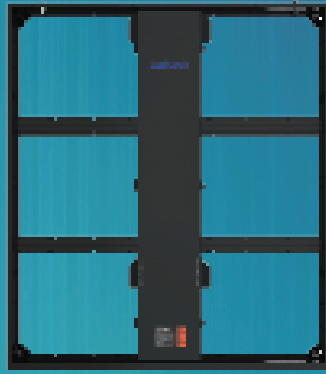
SMD creates a better viewing effect with less sunlight reflecting on the surface, and for added durability, the UsurfaceIII is waterproof.



Wide Viewing Angle

The viewing angle of SMD is overall wider than DIP. Wider viewing can reach a greater range of visibility to improve efficiency of advertising, with UsurfaceIII the possibilities are endless.

Front and Rear Maintenance



Front and rear maintenance makes for a much easier operation in different applications, and installation so easy that one individual can handle setup.

Parameter	Value	
Pixel Pitch	16.67mm	
LED Type	3-in-1 SMD	
Brightness	6500cd/m ² (nits)	8,000 cd/m ² (nits)
Pixels Per Panel	72 x 54 pixels	
Pixel Density	3,600 pixels/m ²	
Weight	37.8 kg (83.3 lbs)	32.4 kg (71.4 lbs)
Module Size	W400mm x H300mm (15.7in x 11.8in)	
Cabinet Size	W1200mm x H900mm x D96mm (47.2in x 35.4in x 3.8in)	
Aspect Ratio	4:3	
Material	Die-casting Aluminum	
Ingress Protection	IP65(Front)IP54(Rear)	IP65(Front)IP54(Rear)
Operating Temperature/Humidity	-20°~ +50° / 10~90%RH	
Storage Temperature/Humidity	-30°~ +60° / 10~80%RH	
Maintenance	Front	Rear
Horizontal / Vertical Viewing Angle	140°/120°	
Color Temperature	2000-9300K Adjustable	
Brightness Control	Manual/Automatic	
Contrast Ratio	8000:1	12000:1
Input Power (Max/Typical)	650W/m ² / 217W/m ²	750W/m ² / 250W/m ²
Video Frame Rate	50/60 Hz	
Refresh Rate	3840 Hz	
Input Voltage	100~240VAC	
Input Power Frequency	50~60 Hz	
Input Signal	DVI/HDMI/VGA/SDI/DP/AV	
Lifespan	100,000 hours	
Mounting Configurations	Fixed	

Specifications are for reference only and are subject to change without notice.



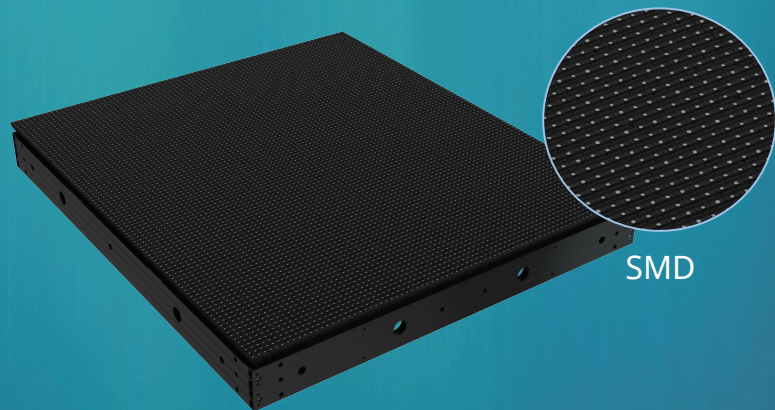
UsurfaceIII 16

1200 x 1200mm
OUTDOOR SOLUTION

- High Brightness, Up to SMD 8,000nits.
- High Contrast Ratio.
- Greater Wide Viewing Angle.
- Front and Rear Maintenance.

High Brightness & Contrast

SMD creates a better viewing effect with less sunlight reflecting on the surface, and for added durability, the UsurfaceIII is waterproof.



Wide Viewing Angle

The viewing angle of SMD is overall wider than DIP. Wider viewing can reach a greater range of visibility to improve efficiency of advertising, with UsurfaceIII the possibilities are endless.

Front and Rear Maintenance



Front and rear maintenance makes for a much easier operation in different applications, and installation so easy that one individual can handle setup.

Parameter	Value	
Pixel Pitch	16.67mm	
LED Type	3-in-1 SMD	
Brightness	6500cd/m ² (nits)	8,000 cd/m ² (nits)
Pixels Per Panel	72 x 72 pixels	
Pixel Density	3,600 pixels/m ²	
Weight	49.4 kg (108.9 lbs)	43.8 kg (96.6 lbs)
Module Size	W400mm x H300mm (15.7in x 11.8in)	
Cabinet Size	W1200mm x H1200mm x D96mm (47.2in x 47.2in x 3.8in)	
Aspect Ratio	1:1	
Material	Die-casting Aluminum	
Ingress Protection	IP65(Front)IP54(Rear)	IP65(Front)IP54(Rear)
Operating Temperature/Humidity	-20°~ +50° / 10~90%RH	
Storage Temperature/Humidity	-30°~ +60° / 10~80%RH	
Maintenance	Front	Rear
Horizontal / Vertical Viewing Angle	140°/120°	
Color Temperature	2000-9300K Adjustable	
Brightness Control	Manual/Automatic	
Contrast Ratio	8000:1	12000:1
Input Power (Max/Typical)	650W/m ² / 217W/m ²	750W/m ² / 250W/m ²
Video Frame Rate	50/60 Hz	
Refresh Rate	3840 Hz	
Input Voltage	100~240VAC	
Input Power Frequency	50~60 Hz	
Input Signal	DVI/HDMI/VGA/SDI/DP/AV	
Lifespan	100,000 hours	
Mounting Configurations	Fixed	

Specifications are for reference only and are subject to change without notice.